

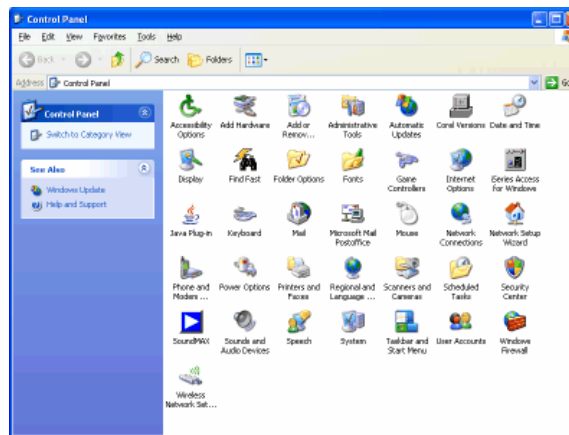


Wireless Security: How To's

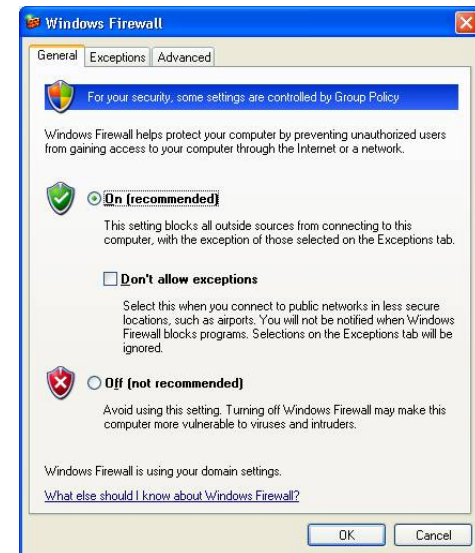
Turning On Windows Firewall



Select the Control Panel icon from the Start menu.



In Control Panel and double click the Windows Firewall icon.



Select the "On (recommended)" radio button to enable the one-way firewall.



Wireless Security: How To's

Disable Wireless Auto Connect

1.)



Select the Control Panel icon from the Start menu.

2.)

Double click the Network Connections icon to bring up a list of network adaptors on this computer.

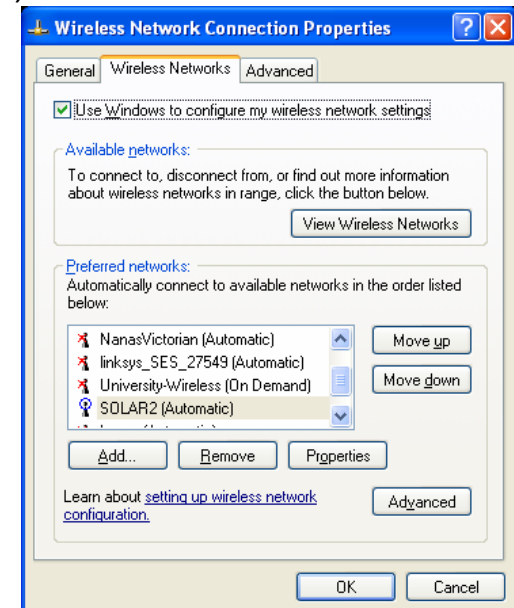
3.)

Right click on the Wireless Network Connection icon and select "Properties"

4.)

Select the "Wireless Networks" tab on the properties Dialog.

5.)



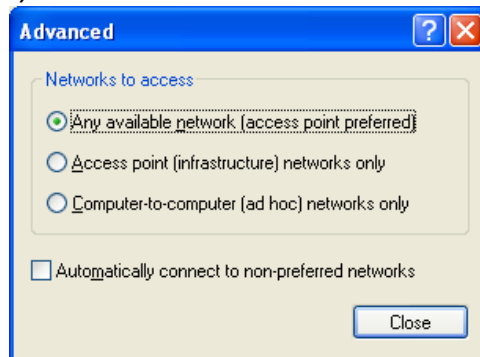
Select the Control Panel icon from the Start menu.



Wireless Security: How To's

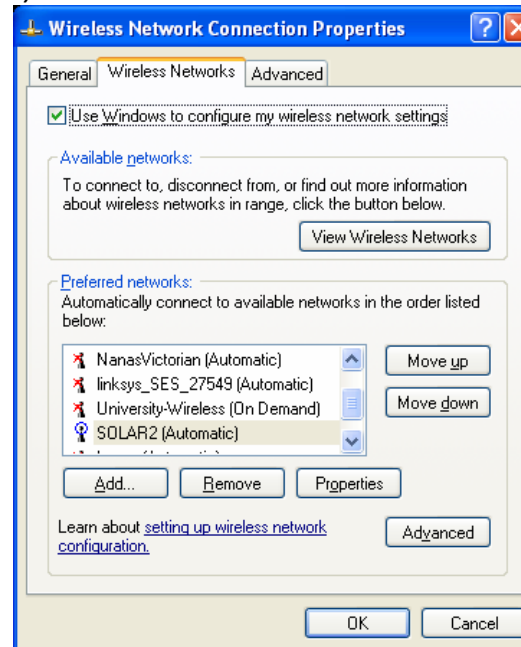
Disable Wireless Auto Connect

6.)



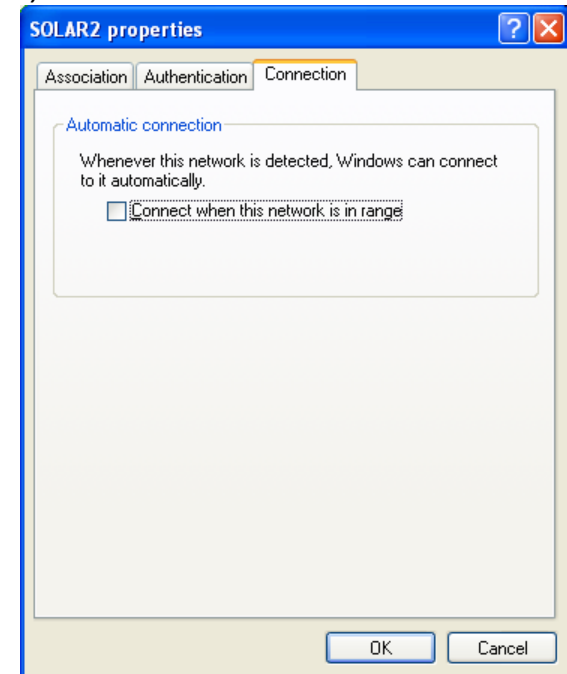
Insure the checkbox next to "Automatically connect to non-preferred networks" is cleared. Click "Close".

7.)



Select a preferred network and click "Properties" then click the "Connection" Tab.

8.)



Clear the check box labeled "Connect when this network is in range".