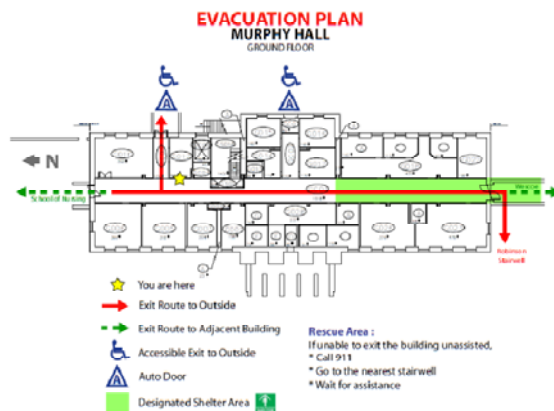


# Emergency Preparedness

Emergency Preparedness is vital to the safety and well-being for individuals on the University of Kansas Medical Center (KUMC) campus. The Environment, Health & Safety (EHS) office has put together this page to assist individuals in preparing for emergencies. If you have any questions or concerns, please contact the EHS office at 913-588-1081. If you have an immediate emergency, call 913-588-5030 for the Police Dispatcher.

## Prior to an Emergency

- ❖ You should familiarize yourself with at least two exit routes from your normal work area in case one of them becomes unavailable.
- ❖ You should familiarize yourself with “Blue Phone” Locations located throughout campus. These phones will contact you directly to the police dispatcher. Locations to “Blue Phone” can be found at the following website:  
[http://www.kumc.edu/police/safety\\_phone.html](http://www.kumc.edu/police/safety_phone.html)
- ❖ You should check posted maps and instructions located throughout campus buildings for emergency information. Examples of these maps and instructions are shown below.



## Murphy Emergency Information

### In Case of Fire

Pull the nearest fire alarm and evacuate the building by going to **Parking Lot 29/50** located on the northeast of the intersection of Rainbow Blvd. and 39<sup>th</sup> Street. Check in with your Floor Coordinator. Remain in Assembly Area until ALL CLEAR has been given.

### In Case of Severe Weather

Proceed to the Ground Floor Hallway to Wescoe. Shelter areas are designated with the green Severe Weather Shelter sign shown above.

### In Case of a Medical Emergency or Public Safety Emergency

Dial **911** Services from a **land line telephone** to summon help through the KUMC 911 Call Center. For a medical emergency have someone meet emergency responders at the door to the building to lead them to the person needing medical attention.

*Note: Call 913-588-5030 from your cell phone.*

### Individuals Requiring Special Assistance:

Persons who may require assistance in the case of an emergency should inform your instructor, meeting leader or Emergency Floor Coordinator so that special assistance can be provided. There are no areas designated as "Area for Evacuation Assistance" located in Murphy.

For more information on our emergency procedures, contact the Environment, Health & Safety Office at 588-1081.

- ❖ You should familiarize yourself with the “LifeSliders” found throughout campus. These are used to evacuate disabled individuals up and down stairs. The locations of the “LifeSliders” are demarcated on the Evacuation Maps. Training on using the “LifeSliders” can be found at the following website:  
[http://www2.kumc.edu/safety/lifeslider\\_training.html](http://www2.kumc.edu/safety/lifeslider_training.html)
- ❖ You should know the locations of Severe Weather Shelter Areas in your normal work area. An example of a Severe Weather Shelter Area is shown below.



## During an Emergency

- ❖ You should not use elevators during an emergency.
- ❖ If you are in immediate danger, call 913-588-5030 for the police dispatcher. The police dispatcher can also be reached by dialing 911 from a campus phone or by using an emergency “Blue Phone” located throughout campus.
- ❖ You should check with the various notification systems available at KUMC:
  - ALERTUS notification system – These units are found throughout campus and will notify the public of all-hazards on campus using sirens, strobes and written information will be disseminated across the screen. An example of the Alertus units is below.



- Fire alarms – Various kinds of fire alarms are found on campus. An example of a fire alarm is below.



- RAVE Text Messaging- Individuals may “opt-in” to the RAVE text messaging system by going to the following website: <https://sa.ku.edu/psp/saku/?cmd=login>
- Group e-mails – Emergency information will also be disseminated by e-mail
- Information phone lines (913-588-INFO) – The information phone line will also have emergency information.

Further information can be found at the KUMC Emergency Plan which is located at the following site: [http://www2.kumc.edu/safety/Emergency\\_Management\\_Plan.pdf](http://www2.kumc.edu/safety/Emergency_Management_Plan.pdf)