

KANSAS IDeA NETWORK OF BIOMEDICAL RESEARCH EXCELLENCE (K-INBRE)

Research Initiative Boosts Biomedical Research Capacity

By Renee Van Erp



The K-INBRE recently hosted a two-day symposium in Manhattan, Kan., with nearly 200 participants from the networked campuses. Joan Hunt (right) welcomed one of the speakers, R. Michael Roberts, curator's professor at the University of Missouri, Columbia, and vice chair of the K-INBRE External Advisory Committee, whose topic was entitled, "Can a Mother's Diet Influence the Sex of her Offspring?"

During the past eight years, the Kansas INBRE has been awarded more than \$25.6 million to build research infrastructure throughout the state of Kansas.

Funded by the National Center for Research Resources at the National Institutes of Health, the Kansas IDeA Networks of Biomedical Research Excellence (K-INBRE) is based at the University of Kansas Medical Center. Under the direction of Principal Investigator Joan Hunt, the K-INBRE fosters a biomedical research network among 10 campuses: the University of Kansas Medical Center, the University of Kansas - Lawrence, Kansas State University, Wichita State University, Emporia State University, Fort Hays State University, Haskell Indian Nations University, Pittsburg State University and Washburn University in Kansas, along with Langston University in Oklahoma.

"The K-INBRE helps Kansas develop its biomedical research workforce, support student and faculty investigators on our 10 campuses and expand cutting-edge technology, particularly bioinformatics. Collectively, these strengthen the ability of Kansas researchers to contribute new initiatives and approaches for improving human health and, in the process, highlight the role of research in achieving the goals of our institutions of higher learning." says Joan Hunt, PhD, university distinguished professor and vice chancellor for biomedical research infrastructure. "The impact this program has had on training of new biomedical researchers is evident in each of the annual K-INBRE Symposia, the 7th of which was held in January 2009."



Students from the 10 K-INBRE campuses had an opportunity to discuss their posters, as well as give oral presentations. These Emporia State University students enjoyed the poster session in their commemorative 2009 Symposium sweatshirts: (left to right) Jessica Johnson, Kelsey Hinckley, Megan Lassley and Aniesa Slack

INSIDE THIS ISSUE

- 1 K-INBRE
- 2 CReDO
- 2 ECRT
- 3 NEW AWARDS
- 4 GRANT RENEWALS
- 6 MEET THE STAFF
- 7 FROM THE DIVISION
- 8 CALENDAR OF EVENTS

Funds from the K-INBRE program currently support several multidisciplinary projects that include fighting cancer through the discovery of potential drug therapies.

"We are fortunate to have so many talented investigators working on the cures for tomorrow," said Dr. Hunt.

For more information about the K-INBRE, visit <http://www.kumc.edu/kinbre>. ❖



Stan Svojanovsky, Research Assistant Professor and bioinformatics specialist on the KUMC campus, visits with Sue Brown, professor and bioinformatics core director on the KSU campus, at the K-INBRE Symposium poster session.

CLINICAL RESEARCH DEVELOPMENT OFFICE (CReDO)

By Diana Naser

Housed in the Office of the Director of Heartland Institute for Clinical and Translational Research (HICTR), the Clinical Research Development Office (CReDO) will serve as the central support unit within the University to assist faculty with transforming a research concept into a cutting-edge clinical or translational research study. In providing an intensive level of support and services for investigators, the CReDO will work closely with the Research Institute. As Deputy Director of HICTR, Lauren Aaronson, PhD, RN, will be responsible for overall functioning of the CReDO and will head up and coordinate the scientific support services. Diana Naser, RN, MS, will serve as the Executive Director for Clinical Research Administration and will oversee all the research administration support services.

The main goal of the CReDO is to assist the investigator through every phase of the research study development process—from concept and project development through the myriad of approval processes to ongoing assistance with project implementation and monitoring. Specifically, the CReDO will:

- Centralize and coordinate clinical research resources across KUMC and enhance the current research infrastructure. Integrate resources that are currently separate or decentralized and add new services not currently available to investigators. Disseminate clinical research information from one comprehensive point.
- Provide centralized support for regulatory processes. Provide support to investigators that promotes protection of human subjects and facilitates compliance with federal regulations. Improve overall institutional compliance and quality of research. Help reduce obstacles encountered in the conduct of research. Improve efficiency and productivity. Decrease time for clinical trials activation.
- Reduce duplication of regulatory activities across projects, departments and collaborating institutions resulting in cost savings as a result of sharing of resources.
- Assist investigators with developing clinical and translational research studies by facilitating connections with other investigators, establishing project development teams, and offering protocol document development services.
- Facilitate education, training and sharing of best practices for clinical and translational research.❖

EFFORT CERTIFICATION AND REPORTING TECHNOLOGY (ECRT)

By Elena Reyes

This July, the University of Kansas Medical Center Research Institute will launch a new effort-reporting system to replace the current paper effort-reporting system currently used by the institution. The new system, known as Effort Certification and Reporting Technology (ECRT), is Web-based, a significant improvement from the cumbersome paper forms.

The current paper system was launched more than 20 years ago. Federal requirements pertaining to effort have evolved significantly in recent years, and our technology has not evolved at the same rate. To improve our ability to comply with federal requirements, we need to upgrade our systems and business processes.

ECRT will provide the following enhancements:

- Electronic notification, routing, and certification
- 24/7 access via web browser
- On demand effort percentages during reporting period
- Electronic access to current and past certification data
- Standard reports and data queries
- Standardized processes, administrative efficiency, and strengthen compliance

Faculty and staff will be able to sign into ECRT with their Novell User ID using KUMC Central Authentication Server (CAS). The Web-based software is easy to use and fully compliant with the current federal regulations. It frees researchers from having to complete and route pieces of paper, and it improves the University's ability to track certification completeness and identify situations that require follow-up.

Future announcements regarding the implementation of the ECRT system will be forthcoming.

We are working hard to make this transition as easy as possible. Please feel free to contact us with any questions or concerns you may have.

Thank you,

Tim Siskey
Financial Systems Analyst
tsiskey@kumc.edu
588-5313

Elena Reyes
Effort Reporting Specialist
ereyes@kumc.edu
588-5361

Training will be provided for all faculty, academic staff, and PI's who work on sponsored projects starting in May 2009. We will update the Research Institute Web site with new information as it becomes available.❖

NEW AWARDS

CONGRATULATIONS!

Aleksunes, Lauren M: NIH for Protective Role of Mrp2 during Chemotherapy-Induced Kidney Injury; \$90,000

Bai, Hyoung Woo: Am Heart Assn Heartland for Modulation of COX-mediated formation of various arachidonic acid metabolites in vitro and in vivo by dietary polyphenols; \$52,000

Buch, Shilpa J: NIH for PLGA/Antisense IL-10: Gene Therapy for Cocaine Abusers with HAD; \$436,736

Cheng, Nikki Laiki: Kansas Cancer Institute for Exploration of Fibroblast: Immune Cell interactions in breast cancer; \$35,000

Dhillon, Navneet Kaur: NIH for Oral Delivery of Nanoparticles Encapsulated with HIV-DNA Vaccine; \$147,000

Dubinsky, Richard M: University of Rochester [Robert Wood Johnson Foundation] for Analysis of Life Decisions (ALD) Survey within COHORT

Farassati, Faris: Marsha Rivkin Ctr for Ovarian Cancer Res for A Novel Strategy for Targeting Ovarian Cancer; \$30,000

Hale, Lisa R: KVC Behavioral HealthCare, Inc. for Integrating Research at KVC; \$25,200

Johnston, Judy Ann: United Methodist Health Ministry Fund for Healthy Congregations 2 Initiative; \$270,978

Kimler, Bruce F: Am Cancer Society for Institutional Research Grant; \$270,000

Kramer, Jeffrey B: Kansas University Endowment Assn for Secondary Prevention After Coronary Bypass Surgery: A Pilot Study; \$65,000

Levant, Beth: NIH for N-3 Fatty Acids and Outcomes in Pediatric Traumatic Brain Injury; \$150,000

Little Jr, Charles Durwood: Mathers Charitable Foundation for Deciphering the biomechanical morphogenetic code; \$535,641

Nollen, Nicole L: Kansas Cancer Institute for Improving medication adherence and tobacco treatment for African American Smokers

Popescu, Mihai: NIH for Advanced Source Reconstruction Techniques for Fetal Magnetocardiography; \$404,250

Sawyer, Tama S: KANSAS DEPT OF HEALTH AND ENVIRONMENT [DEPARTMENT OF HEALTH AND HUMAN SERVICES] for Mid-America Poison Control Center 2009; \$75,000

Stanford, John Anderson: University of Kansas Center for Research [Kansas City Area Life Sciences Institute] for Millimeter-Resolution Mouse Force Tracker; \$2,351

Swerdlow, Russell Howard: NIH for Cytochrome Oxidase Polymorphisms in Aging; \$79,793

Xiao, Zhou-Sheng: NIH for Mechanosensing function on primary cilium-polysyn complex in bone; \$363,000

Notices posted for awards received 11/16/2008 – 2/15/2009. If we have missed a notice of an award, please accept our apologies and notify us so that we may include your achievement in the next newsletter: researchinstitute@kumc.edu

GRANT RENEWALS

CONGRATULATIONS!

Ahmad, Omar S: Hubert and Richard Hanlon Trust for Morphometric Analysis of Dopamine Neurocircuitry in Rats Bred to Prefer Alcohol; \$32,119

Albertini, David F: The Eshe Fund for Imaging Stem Cells; \$25,126

Barkman Jr, Harold W: Children's Mercy Hospital & Clinics [Assn of Occupational & Environmental Cli] for Region VII Pediatric Environmental Health Speciality Unit (PEHSU); \$39,106

Barohn, Richard Joel: Kansas Technology Enterprise Corp for Clinical Research Coordinator Service in the Heartland Institute for Clinical and Translational Research (HICTR); \$102,400

Belousov, Andrei: NIH for Cholinergic Regulation in the Hypothalamus; \$90,214

Biswas, Indranil: Am Heart Assn Natl for Mechanisms of Virulence Gene Regulation in Streptococcus Pyogenes; \$65,000

Biswas, Indranil: NIH for Mechanisms of Virulence Gene Regulation in Streptococcus mutans; \$254,426

Burns, Jeffrey M: Kansas University Endowment Assn for Brain Aging Project; Energy Metabolism and Brain changes with age and AD; \$5,728

Burns, Jeffrey M: The Dana Foundation for Intranasal Insulin and Memory in Early Alzheimer's Disease; \$100,000

Butler, Merlin G: Baylor College of Medicine [NIH] for Rare Disease CRC for New Therapies and New Diagnostics; \$64,542

Carlson, Susan Elaine: NIH for DHA Supplement and Pregnancy Outcome; \$93,150

Carlson, Susan Elaine: NIH for DHA Supplement and Pregnancy Outcome; \$487,281

Cirstea Apostol, Mihaela Carmen: Am Heart Assn Heartland for Multimodal Neuroimaging in Stroke Motor Rehabilitation; \$71,500

Cohen, Mark Steven: Private Sponsor for Research Project; \$4,499

Czirok, Andras: NIH for Role of fibronectin in vascular plexus self-organization during embryogenesis; \$257,250

Davis, Ann Marjorie: Health Care Foundation of Greater Kansa for Healthy Hawks Pediatric Obesity Clinic; \$110,000

Dick, Arthur R: Muscular Dystrophy Assn for MDA Clinic Grant; \$19,500

Dileepan, Kottarapp N: NIH for Mast Cell-Induced Inflammation in Vascular Disease; \$356,843

Doolittle, Gary C: NIH for Heartland Cancer Information Service; \$1,356,722

Dunn, Winifred: KCART for Brain/Behavior profiles to distinguish individual differences in children with Asperger syndrome; \$9,958

Dunton, Nancy E: American Nurses Assn for NDNQI 2007-2010; \$10,615

Dunton, Nancy E: American Nurses Assn for NDNQI 2007-2010; \$1,381,569

Dunton, Nancy E: American Nurses Assn for NDNQI 2007-2010; \$1,017,611

Dunton, Nancy E: American Nurses Assn for NDNQI 2007-10 Work Order #3; \$55,463

GRANT RENEWALS – CONTINUED

Dunton, Nancy E: Arizona State University for Data and Research Support for Study of Electronic Medical Records and Nurse Staffing: Best Practices and Performance Impacts; \$16,293

Ellerbeck, Kathryn Anne: KCART for Hormones and DNA Methylation in Autism; \$21,042

Engelman, Kimberly Kay: Am Cancer Society for Development of a Comprehensive Mammography Services Quality Index; \$146,464

Fenton, Aron W: NIH for Dissecting Allosteric in Pyruvate Kinase; \$294,000

Fontes, Joe D: NIH for Regulator and Regulation of MHC Class II Genes; \$215,356

Fox, Michael H: University of Kansas Center for Research [DEPARTMENT OF HEALTH AND HUMAN SERVICES] for Medicaid Infrastructure Grant-WORK-Work Opportunities Reward Kansans (Comprehensive Employment and Systems Development); \$33,676

Gonzalez, Norberto C: NIH for Microvascular function in environment hypoxia; \$257,250

Grantham, Jared J: NIH for Kansas Polycystic Kidney Imaging Program (CRISPII); \$285,037

Greiner Jr, Keith A: NIH for Tailored Touchscreen Colorectal Cancer Prevention in Urban Core Clinics; \$473,423

Hamera, Edna K: NIH for A Psychiatric Rehabilitation Approach to Weight Loss; \$184,559

Hawley, Suzanne Reid: University of Kansas Center for Research [Centers for Disease Control and Prevent] for Prevalence of Developmental Disabilities among Children with Epilepsy in Rural Populations; \$207,730

Johnston, Judy Ann: United Methodist Health Ministry Fund for Keep it Simple: Healthy Eating and Community Discussions for the African American Community; \$17,441

Johnston, Judy Ann: United Methodist Health Ministry Fund for Self-Care Workshops with Followup and Evaluation; \$61,081

Kambhampati, Suman: University of Kansas Center for Research [NIH] for Design of 2-Methoxyestradiol pro-drug and evaluation of its anti-cancer potential; \$54,339

Klaassen, Curtis: NIH for Coordinate Regulation of Uptake and Efflux Transporters; \$298,999

Levine, Steven M: University of California Los Angeles [NIH] for Genetic Modifiers of Anthrax Lethal Toxin Induced Pathophysiology; \$147,000

Little Jr, Charles Durwood: University of Indiana [NIH] for IBCST-Competitive Renewal of MSM: Multiscale Studies of Segmentation in Vertebrates; \$71,958

Nicot, Christophe Pierre: NIH for Mechanisms of Human T-Cell Immortalization by HTLV-1 Tax; \$197,576

Nudo, Randolph J: NIH for Reorganization of Motor Cortex Following Brain Injury; \$523,878

Peterson, Kenneth R: Am Heart Assn Heartland for TSPYL1: A Therapeutic Target for Treating SCD-related Stroke; \$71,500

Pinson, David M: Private Sponsor for Research Project; \$28,180

Pinson, David M: Private Sponsor for Research Project; \$6,942

Quaney, Barbara M: NIH for Motor Performance and Cortical Changes in Chronic Stroke; \$113,906

GRANT RENEWALS – CONTINUED

Redford, Linda J: KANSAS DEPARTMENT ON AGING for Workforce Enhancement in Nursing Facilities; \$30,637

Shireman, Theresa Irene: University of Wisconsin [NIH] for A team model of hypertension care in African Americans; \$8,849

Smith, Peter G: NIH for Female pelvic pain, hormones, and neuroplasticity; \$261,229

Smith, Peter G: NIH for Mechanisms of Sympathetic Axon Pruning; \$321,489

Wetta-Hall, Ruth: Future Leaders Outreach Network [DEPARTMENT OF HEALTH AND HUMAN SERVICES] for Community Based Abstinence Education (CBAE) Program; \$60,379

Wright, Douglas E: University of Kansas Center for Research [NIH] for Caveolin-1 and Altered Neuregulinism in Diabetic Neuropathy; \$20,497

Zhu, Bao Ting: NIH for Dietary Polyphenols are Consequential Epigenetic Modulators of Gene Expression; \$349,706

Zimmerman, Mary Kaye: University of Kansas Center for Research [DEPARTMENT OF HEALTH AND HUMAN SERVICES] for Mental Health Needs of Kansas Nursing Facility Residents Receiving Medicaid: Prevalence, Relationship to Nursing Facility Tenure, and Evidence Based Interventions; \$14,911

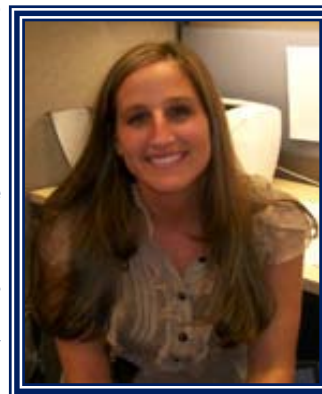
Notices posted for renewals received 11/16/2008 – 2/15/2009. If we have missed a notice of an award, please accept our apologies and notify us so that we may include your achievement in the next newsletter: researchinstitute@kumc.edu

MEET THE STAFF

MOLLY GUNTER, OFFICE OF CLINICAL RESEARCH ADMINISTRATION

Molly Gunter has a Bachelor's degree in Chemistry and also completed the Pre-Pharmacy program at Fort Hays State University. Molly is a member and a Certified Clinical Research Professional through the Society of Clinical Research Association. Molly is currently getting her Master's degree in Clinical Research Organization and Management at Drexel University School of Medicine.

Molly has been a part of the KUMC-Research Institute for a little over three years. She began as an Administrative Trials Coordinator and throughout the years has been promoted to a Regulatory Support Program Director. Her role is a supervisory position that monitors the day-to-day progress of the CReDO office. Her main responsibilities includes training, assisting with the Executive Director of CReDO, meeting with PIs on protocol development, sitting on advisory committees, assigning workload and many other projects.



When asked about what she enjoys about research Molly says, "I enjoy the wealth of information that comes from working in research. I always seem to learn something new each and every day. There never seems to be a dull moment or lack of work in research." ❖

Thank you!

The KUMC Research Institute would like to thank the following individuals for their contribution to the winter newsletter edition: Joan Hunt, Kathy Schleeter, and Renee Van Erp

Submission deadline for Spring issue: 04/17/2009

Questions, comments, submissions, subscribe/unsubscribe, please contact Kelly Robertson at researchinstitute@kumc.edu
The KUMC Research Institute newsletter is also available on the KUMC Research Institute website: <http://www2.kumc.edu/researchinstitute/>

FROM THE DIVISIONS

SPONSORED PROGRAMS ADMINISTRATION

Gretchen Montez has transferred from Finance to Sponsored Programs Administration. She is now serving as a grant specialist and may be reached at 8-1251.

NIH Update

Effective January 1, 2009, the NIH salary limitation on grants increased to \$196,700.

Enhancing Peer Review: The NIH Announces Updated Implementation Timeline:

January 2009 Due Dates (for potential FY2010 funding)	<ol style="list-style-type: none">1. Early Stage Investigator (ESI) and New Investigator Policy (NOT-OD-09-013; http://grants.nih.gov/grants/guide/notice-files/NOT-OD-09-013.html)2. New NIH Policy on Resubmissions (NOT-OD-09-003; http://grants.nih.gov/grants/guide/notice-files/NOT-OD-09-003.html)
May 2009 Review Meetings (for potential FY2010 funding)	<ol style="list-style-type: none">1. 9-Point Scoring System2. Enhanced Review Criteria3. Formatted Reviewer Critiques4. Scoring of Individual Review Criteria5. Clustering of New Investigator Applications During Review
January 2010 Due Dates (for potential FY2011 funding)	<ol style="list-style-type: none">1. Shorter Applications for R01s and Other Mechanisms2. Restructured Applications to Align with Review Criteria

Grants.gov Update

Adobe-Based Grant Application Forms Now Available for All NIH Funding Opportunity Announcements Requiring Electronic Submission.

REMEMBER: A Grants.gov compatible version of Adobe Reader is required to prepare and submit an Adobe-based application. (Grants.gov currently recommends Adobe Reader versions 8.1.3 or higher; compatible versions are listed on the Grants.gov [Download Software](#) page and are updated as they are produced.). **The Grants.gov compatible version of Adobe Reader must be installed BEFORE downloading the new application forms.**

Please note SPA office has been experiencing network connectivity issues when uploading grant applications through Grants.gov for February submission deadlines. The grants.gov validation process may take up to two days before confirmation is received. We would like to remind you to upload your FINAL proposal package in the [SPA dropbox](#) at least 3 business days prior to agency deadline to avoid submission delay and to allow ample time for correction if an application failed through validation process.

NIH/AHRQ/CDC/FDA require electronic submission of applications via Grants.gov using the SF424 (R&R) forms for Individual Research Career Development Award Programs ("K"s) - with the exception of K12s, this change is effective with February 12, 2009 submission date. Applications previously submitted in paper that are being resubmitted as amended applications must submit electronically.

ADMINISTRATION

The Human Resource office would like to welcome Laura Russo who has joined as the new human resource administrator, she can be reached at 8-1261.

Research Advisory Council Members approved KUMC Research Institute Policy 6.1.06: Payments to Non-employee Nonresident Aliens. The Executive Vice Chancellor has signed this policy into effect. The policy and procedures may be accessed at <http://www2.kumc.edu/researchinstitute/spa/spapoliciesdetail.html>.

FINANCE

Welcomes Amanda Lawson as the Accounts Payable Accountant, she can be reached at 5-5053.

CONTRACTS

Brenda Dolan has transferred from Human Resources to Contracts. She is now serving as the contracts administrator and may be researched at 8-5710.

FROM THE DIVISIONS - CONTINUED

CONTRACTS

Brenda Dolan has transferred from Human Resources to Contracts. She is now serving as the contracts administrator and may be researched at 8-5710.

KU CENTER FOR TECHNOLOGY COMMERCIALIZATION

Law Externs working with KUCTC on Lawrence Campus Spring Semester



Lawrence campus KUCTC staff is working with two law externs during 2009 spring semester. **James Nechleba** is a 2nd year UMKC law student, who earned a Bachelors of Chemical Sciences degree from the University of IL-Champaign in May 2007. James has an interest in engineering and has completed course work in organic and inorganic chemistry, biochemistry, and environmentally friendly "green" chemistry. **Jennifer Haaga** is a 2nd year KU law student, who received her BS in Organismal Biology and Psychology from KU in May 2002. Jen has worked as a law clerk for KU's Office of General Counsel in Lawrence and for the honorable, John Lungstrum, Judge with the US District Court, District of Kansas, Kansas City, KS. She is also a Research Assistant for Professors Michael Hoeflich and Andrew Torrance at the KU School of Law. Next summer Jen will be working as a summer associate for Shook, Hardy & Bacon in Kansas City, MO. She plans on practicing IP law and hopes to take the Patent Bar before graduation. Prior to starting law school, Jen has experience working with the KU Dept of Chemical & Petroleum Engineering, with DaimlerChrysler, and the US Navy Marine Mammal Program.



Medical Center office:

Whitney Bartlow is a 2nd-year UMKC law student, who earned a BA in Human Biology from KU in May 2005. Prior to entering law school, Whitney worked for two years at the Stowers Institute for Medical Research as well as with the Kansas Geological Survey.



Christopher Cole is a 3rd-year UMKC law student, who received his BS in Business Administration from the University of MO-Columbia in May 2005 with emphases in finance & banking, and real estate. Chris has experience originating mortgages for VA, FHA and conventional purchases, has worked as a legal intern with the Financial Industry Regulatory Authority's Dept of Enforcement, and as student legal staff with the UMKC Entrepreneurial Legal Services Clinic.

CALENDAR OF EVENTS

NCURA WORKSHOP: AUDITS AND THE AUDIT PROCESS

MARCH 10

B018 SCHOOL OF NURSING

9:00 AM – 1:00 PM

CLINICAL TRIAL EDUCATIONAL LECTURE SERIES (CTELS)

MARCH 19

WHAT TO EXPECT WHEN YOU'RE INSPECTED", DIANA NASER, RN, MS, CCRP

WAHL HALL WEST AUDITORIUM (KC)/ GREAT PLAINS ROOM (WICHITA)

12:00 PM – 1:00 PM

CLINICAL TRIAL EDUCATION CLASSES (CTEC)

APRIL 3

PROTOCOL DOCUMENT DEVELOPMENT, CONSENT FORMS, INDS

2004 ORR-MAJOR (KC)/ GREAT PLAINS ROOM (WICHITA)

1:00 PM – 5:00 PM

**CONTINUING EDUCATIONS UNITS FOR THE SOCIETY OF CLINICAL RESEARCH ASSOCIATES*

CLINICAL TRIAL EDUCATIONAL LECTURE SERIES (CTELS)

APRIL 16

"CLINICAL TRIALS CASE STUDIES – WHERE DID THEY GO WRONG?", DIANA

NASER, RN, MS, CCRP

WAHL HALL WEST AUDITORIUM (KC)/ GREAT PLAINS ROOM (WICHITA)

12:00 PM – 1:00 PM

SUBMISSION DEADLINE FOR SPRING ISSUE

APRIL 17

SEND TO researchinstitute@kumc.edu

MARCH 2009						
S	M	T	W	T	F	S
1	2	3	4	5	6	7
8	9	10	11	12	13	14
15	16	17	18	19	20	21
22	23	24	25	26	27	28
29	30	31				

APRIL 2009						
S	M	T	W	T	F	S
			1	2	3	4
5	6	7	8	9	10	11
12	13	14	15	16	17	18
19	20	21	22	23	24	25
26	27	28	29	30		

March 10, 2009

9:00 AM – 1:00 PM

**B018 School of Nursing at
The University of Kansas Medical Center**

Please register at – <https://www2.kumc.edu/PDFATraining/>

Audits and the Audit Process

The audit process can be intimidating to those inexperienced with it, especially when an auditor shows up unexpectedly: How should you respond? Do you have to respond? What if the auditor presents an inspector general's badge? In this program we will discuss the audit process and the differences between audits, reviews, inspections and investigations. We will also look at how auditors approach an audit, and the various institutional roles including that of the institutional audit and compliance officer, the central research administrator, and the departmental research administrator.

Learning Objectives:

- Participants will be able to describe the differences between the various types of audit, review and inspection;
- Participants will be able to discuss the audit process and how an auditor approaches an audit;
- Participants will be able to explain the roles and responsibilities of both the agency and institutional players in an audit.

Moderator

David Mayo, Director, Sponsored Research, California Institute of Technology

Panel

Denise Clark, Assistant Vice President for Research Administration and Advancement, University of Maryland, College Park

Thomas Cooley, Chief Financial Officer and Director, Office of Budget, Finance and Award Management, National Science Foundation

Lillie Ryans-Culclager, Director, Engineering Research Administration, School of Engineering, Stanford University

To register for this event please visit <https://www2.kumc.edu/PDFATraining/> or for inquiries contact
Kelly Robertson at krobertson@kumc.edu or 913/588-5436

* Two breaks will be included and light refreshments will be available. You are welcome to bring your own lunch

** This is a DVD of the NCURATV program that was aired via satellite on January 13, 2009