

# **Faculty Research Day and Poster Session**



**November 3, 2011**

# 2011 FACULTY RESEARCH DAY

Thursday, November 3, 2011  
*School of Nursing Auditorium, KUMC*

Welcome to Faculty Research Day 2011. This program was initiated in 1982 with the intent of celebrating research at KUMC and recognizing the excellent work of the KUMC research community. This day provides researchers within KUMC an opportunity to share their work with other investigators and to hear research presentations by world-class scientists from within the Medical Center.

We take special pride in identifying those individuals who deserve special recognition for their research and research administration contributions. Individuals from the schools of Allied Health, Medicine and Nursing may be recognized in one of three categories:

1. The **Chancellors Club Research Award** is reserved for those KUMC faculty who are recognized leaders and who have achieved national and international stature in their chosen fields of research. Nominations are sent to the Vice Chancellor for Research Administration, a committee is selected to review the nominations and the final recommendation forwarded by the Vice Chancellor for Research to the Kansas University Endowment Association.
2. Individuals receiving an **Investigator Research Award** are nominated by the KUMC faculty at large. Nominations are ranked by each schools' research committee and then reviewed by Faculty Assembly Research Committee with recommendations to the Associate Vice Chancellor for Research Administration.
3. **Noffsinger Investigator Award** is awarded to the individual who received the highest ranking in their application to the Lied Endowed Basic Science Program through the KUMC Research Institute. The mission of the Lied Basic Science Grant program is to develop new and innovative ideas that have a high probability of leading to the submission of a new application for national peer-reviewed funding.
4. The **Research Grant Administrator Award** recognizes and honors significant administrative support of the research enterprise of the KUMC and Wichita campuses. Nominations are ranked by the division directors of the KUMC Research Institute with recommendations to the Associate Vice Chancellor for Research Administration.

We thank you for your continued support.



Gregory S. Kopf, PhD  
Associate Vice Chancellor for Research Administration

**FACULTY RESEARCH DAY  
PROGRAM**  
*School of Nursing Auditorium*

12:00 **Welcome and Opening Remarks**

Paul F. Terranova, PhD                      Vice Chancellor for Research  
Susan Carlson, PhD                         Chair, Faculty Assembly Research Committee

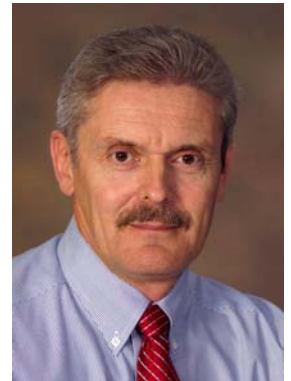
12:15 **Keynote Address**

**D. Gary Gilliland, MD, PhD**  
**Senior Vice President, Franchise Head, Oncology**  
**Merck Research Laboratories**  
*“Oncology Drug Development: Challenges and Opportunities in  
Personalized Cancer Care”*  
Introduced by Paul F. Terranova, PhD  
Vice Chancellor for Research



1:00 **Chancellors Club Award**

**Hartmut Jaeschke, PhD**  
**Professor**  
**Pharmacology, Toxicology & Therapeutics**  
**School of Medicine**  
*“Mechanisms of acetaminophen hepatotoxicity: Translating Basic  
Science into Clinical Practice”*  
Introduced by Stephanie Grinage  
Vice President for Medical Development  
KU Endowment  
Introduced by Curtis Klaassen, PhD  
University Distinguished Professor  
Pharmacology, Toxicology, and Therapeutics



1:20 **Thomas L. Noffsinger Investigator Award**

**T. Rajendra Kumar, PhD**  
**Associate Professor**  
**Molecular and Integrative Physiology**  
**School of Medicine**  
*“Regulation of the Male Germline Stem Cell Niche by FSH and  
Cyclin D2”*  
Introduced by Paul F. Terranova, PhD  
Vice Chancellor for Research



1:40 **Faculty Investigator Research Award**  
**Indranil Biswas, PhD**  
**Associate Professor**  
**Microbiology, Molecular Genetics & Immunology**  
**School of Medicine**  
*"How to Survive in the Biofilm Jungle? An Insight from Streptococci"*  
Introduced by Michael J. Parmely, PhD  
Professor and Interim Chair  
Microbiology, Molecular Genetics & Immunology



2:00 **Faculty Investigator Research Award**  
**Ubolrat Piamjariyakul, RN, PhD**  
**Research Associate Professor**  
**School of Nursing**  
*"Pathway to developing evidence-based health care services delivery programs"*  
Introduced by Marge Bott, RN, PhD  
Associate Dean, Research  
School of Nursing



2:20 Faculty Research Awards Around the KUMC  
**Research Administrator Awards**  
**Biomedical Research Training Program**  
**Kansas IDeA Network of Biomedical Research Excellence Faculty Scholars**  
**2011 Faculty Research and Career Development Awards**

2:30 **Closing Remarks**  
Susan Carlson, PhD  
Chair, Faculty Assembly Research Committee

3:00 – 5:00 **Reception and Poster Viewing**  
Hemenway Kansas Life Sciences Innovation Center  
Beller Conference Center

## Thomas L. Noffsinger Investigator Award

2005  
**John Stanford, PhD**, Molecular and  
Integrative Physiology

2006  
**Bryan L. Copple, PhD**, Pharmacology,  
Toxicology, and Therapeutics

2007  
**Geraldine Arrode, PhD**, Microbiology,  
Molecular Genetics and Immunology

2008  
**Navneet K. Dhillon, PhD**, Molecular and  
Integrative Physiology

2009  
**Jianming Qiu, PhD**, Microbiology,  
Molecular Genetics and Immunology

2010  
**William Brooks, PhD**, Neurology, Hoglund  
Brain Imaging Center

2011  
**T. Rajendra Kumar, PhD**  
Molecular and Integrative Physiology

---

## Research Administrator Award

2003  
**Carol Anderson**, Hearing and Speech  
**Helen Ilc**, Preventive Medicine  
**Rosa Meagher**, Pharmacology

2004  
**Priscilla Reckling**, Nursing  
**Mary Walker**, Center for Environmental and  
Occupational Health

2006  
**Jennifer N. French**, MHSA, Hoglund Brain  
Imaging Center  
**Elizabeth Jenkins**, Microbiology, Molecular  
Genetics and Immunology  
**Loretta Jenkins**, Parkinson's Disease and  
Movement Disorder Center

2007  
**Frederick P. Achen**, BSCS, School of Nursing  
**Heiata Chapman**, Anatomy and Cell Biology  
**Pat Laubinger**, MPA, BSN, Alzheimer and  
Memory Program

2008  
**Joanne McNair**, Preventive Medicine & Public  
Health  
**Lori Wade**, External Affairs

2009  
**Sundra Jordan**, MBA, Institute of Molecular and  
Outcomes Medicine and the Kidney Institute  
**Lori O'Neal**, School of Nursing  
**Cody Tully**, MBA, Pharmacology Toxicology and  
Therapeutics

2010  
**Karen Davis**, Research - Wichita  
**Justine Karungi**, Hoglund Brain Imaging Center  
**Anne Rowe**, Microbiology, Molecular Genetics  
and Immunology  
**Teresa Stenner**, National Database of Nursing  
Quality Indicators

2011  
**Megan Parks**  
Center for Biostatistics and Advanced Informatics

# **Biomedical Research Training Program**

*FY12 Predoctoral Scholars:*

## **Department of Anatomy and Cell Biology**

Natalie Katz (mentor Douglas Wright)  
Kimberly Schmitt (mentor Edward Stephens)

## **Department of Microbiology, Molecular Genetics and Immunology**

Xiaofei Gao (mentor Philip Hardwidge)  
Yong Luo (mentor Jianming Qiu)

## **Department of Molecular and Integrative Physiology**

Aritra Bhattacharjee (mentor Peter Smith)  
Lacey Luense (mentor Lane Christenson)

## **Department of Pharmacology, Toxicology and Therapeutics**

Chaven Hemanthkumar (mentor Partha Krishnamurthy)  
David Williams (mentor Hartmut Jaeschke)  
Kai Wu (mentor Curtis Klaassen)  
Bradley Sullivan (mentor James Luyendyk)

*FY11 Postdoctoral Scholars:*

## **Department of Pathology and Laboratory Medicine**

Safinur Atay (mentor Andrew Godwin)  
Marcia Bellon (mentor Christophe Nicot)  
Stephen Renaud (mentor Michael Soares)

## **Department of Pharmacology, Toxicology and Therapeutics**

Dan Li (mentor Xiaobo Zhong)

## **Kansas IDeA Network of Biomedical Research Excellence Faculty Scholars (K-INBRE)**

2003

Leslie Heckert, PhD, Molecular & Integrative Physiology  
Douglas Wright, PhD, Anatomy and Cell Biology  
Rajesh Pahwa, MD, Neurology

2004

Gregory Vanden Heuvel, PhD, Anatomy and Cell Biology  
Warren Nothnick, PhD, Obstetrics & Gynecology

2005

Shilpa Buch, PhD, Pathology and Laboratory Medicine  
Gustavo Blanco, MD, PhD, Molecular and Integrative Physiology

2006

Jeanne Drisko, MD, Alternative Medicine  
Beth Levant, PhD, MPA, Pharmacology, Toxicology, and Therapeutics

2007

Christophe Nicot, Ph.D., Department of Microbiology, Molecular Genetics and Immunology  
Irina V. Smirnova, Ph.D., Department of Physical Therapy & Rehabilitation Sciences  
John A. Stanford, Ph.D., Department of Molecular and Integrative Physiology

2008

Jeffrey M. Burns, MD, Alzheimer and Memory Program  
Bryan L. Copple, PhD, Pharmacology, Toxicology and Therapeutics  
Margaret G. (Peggy) Petroff, PhD, Anatomy and Cell Biology

2010

Brenda J. Rongish, PhD, Anatomy and Cell Biology  
T. Rajendra Kumar, PhD, Molecular and Integrative Physiology  
James P. Luyendyk, PhD, Pharmacology, Toxicology and Therapeutics

## **2011 Faculty Research and Career Development Awards**

### **BIRCWH (K 12) Scholars**

Clifford W Mason, Obstetrics and Gynecology  
Christie Ann Befort, PhD, Preventive Medicine and Public Health  
Kelly Anne Bosak, PhD, ARNP, School of Nursing  
Holly Renee Hull, PhD, Dietetics and Nutrition, School of Health Professions  
Jennifer Rose Klemp, PhD, MPH, Breast Cancer Prevention Center

### **CTSA (KL2) Scholars**

Megha Ramaswamy, PhD, Preventive Medicine and Public Health  
Neena Sharma, PhD, Physical Therapy and Rehabilitation Sciences  
Eric Vidoni, PT, PhD, Neurology  
Jo Wick, PhD, Biostatistics

### **Frontiers Pilot Award**

Sandra Billinger, Ph.D., (Junior) Physical Therapy and Rehabilitation Sciences  
Byron Gajewski, Ph.D., Biostatistics  
Andrew Godwin, Ph.D., Pathology  
Jianghua He, Ph.D., (Junior) Biostatistics  
Renee Mijal, Ph.D., (Junior) Preventive Medicine and Public Health  
Priyanka Sharma, MD, (Junior) Internal Medicine  
Connie Wang, MD, (Junior) Internal Medicine  
Kristine Williams, Ph.D., Nursing

### **Career Awards**

K12 - Gene T Lee, MD, Maternal-Fetal Medicine  
K08 - Monica Fisher, PhD, Preventive Medicine and Public Health-Wichita  
K08 - Jason R Stubbs, MD, Nephrology and Hypertension  
K23 - James Bacon Wetmore, MD, Nephrology and Hypertension  
K23 - Jeffrey M Burns, MD, Alzheimer and Memory Program  
K23 - Ann Marjorie Davis, PhD, MPH, ABPP, Behavioral Pediatrics  
K23 - Nicole L Nollen, PhD, MA, Preventive Medicine and Public Health  
K23 - Susana Ruth Patton, PhD, CDE, Pediatrics Clinics  
K02 - John Anderson Stanford, PhD, Molecular and Integrative Physiology

## Faculty Investigator Research Awards

1982

**Bruce K. Kimler, Ph.D.**, School of Medicine  
**Kathleen O'Connell, R.N., Ph.D.**, School of Nursing  
**Michael J. Parmely, Ph.D.**, School of Medicine  
**Sheldon H. Preskorn, Ph.D.**, School of Medicine

1986

**Joseph Lutkenhaus, Ph.D.**, School of Medicine

1987

**Susan J. Norton, Ph.D.**, School of Allied Health  
**Andrew Parkinson, Ph.D.**, School of Medicine  
**Sue Popkess-Vawter, R.N., Ph.D.**, School of Nursing

1988

**Glen K. Andrews, Ph.D.**, School of Medicine  
**Deborah E. Kipp, Ph.D.**, School of Allied Health  
**Carol E. Smith, R.N., Ph.D.**, School of Nursing

1989

**Winifred W. Dunn, Ph.D.**, School of Allied Health  
**Michael J. Soares, Ph.D.**, School of Medicine  
**Roma L. Taunton, R.N., Ph.D.**, School of Nursing

1990

**Analee Beisecker, Ph.D.**, School of Allied Health  
**Bala Chandran, Ph.D.**, School of Medicine  
**Sharon Summers, R.N., Ph.D.**, School of Nursing

1991

**Chuck Biddle, Ph.D.**, School of Allied Health

**Edna Hamera, R.N., Ph.D.**, School of Nursing  
**Joan S. Hunt, Ph.D.**, School of Medicine  
**Brooks A. Keel, Ph.D.**, School of Medicine-Wichita

1992

**Richard H. Alper, Ph.D.**, School of Medicine  
**Chia Y. Lee, Ph.D.**, School of Medicine

1993

**John S. Davis, Ph.D.**, School of Medicine-Wichita  
**John A. Ferraro, Ph.D.**, School of Allied Health  
**George Melnykovich, Ph.D.**, School of Medicine  
**Geri Neuberger, R.N., Ph.D.**, School of Nursing

1994

**Paul F. Terranova, Ph.D.**, School of Medicine

1995

**Nancy E. Berman, Ph.D.**, School of Medicine  
**Marc F. Fey, Ph.D.**, School of Allied Health  
**Janet D. Pierce, DSN**, School of Nursing

1996

**Chukuka Enwemeka, Ph.D.**, School of Allied Health  
**Nancy Hoffart, R.N., Ph.D.**, School of Nursing  
**Michael S. Insana, Ph.D.**, School of Medicine  
**Peter Smith, Ph.D.**, School of Medicine

1997

**Michael P. Sarras, Ph.D.**, School of Medicine  
**Judith Widen, Ph.D.**, School of Allied Health  
**Phoebe Williams, R.N., Ph.D.**, School of Nursing

1998

**Mark E. Chertoff, Ph.D.**, School of Allied Health  
**Mark T. Fisher, Ph.D.**, School of Medicine  
**Norberto C. Gonzalez, M.D.**, School of Medicine  
**William H. Kinsey, Ph.D.**, School of Medicine  
**Carol E. Smith, R.N., Ph.D.**, School of Nursing

1999

**Lisa Stehno-Bittel, Ph.D.**, School of Allied Health  
**Diane K. Boyle, R.N., Ph.D.**, School of Nursing  
**Leslie L. Heckert, Ph.D.**, School of Medicine  
**Amy O'Brien-Ladner, M.D.**, School of Medicine

2000

**Jasjit Ahluwalia, M.D.**, School of Medicine  
**Paul Cheney, Ph.D.**, School of Medicine  
**Carol J. Fabian, M.D.**, School of Medicine  
**Sarah Forbes, R.N., Ph.D.**, School of Nursing

2001

**Ann K. Cobb, R.N., Ph.D.**, School of Nursing  
**Barry Festoff, M.D.**, School of Medicine  
**Joan McDowd, Ph.D.**, School of Allied Health  
**John Wood, Ph.D.**, School of Medicine

2002

**James L. Voogt, Ph.D.**, School of Medicine  
**Lauren S. Aaronson, R.N., Ph.D.**, School of Nursing  
**Charles D. Little, Ph.D.**, School of Medicine

2003

**Catana Brown, PhD, OTR, FAOTA**, School of Allied Health  
**Helen R. Connors, R.N., Ph.D., Dr PS (Hon), FAAN**, School of Nursing  
**Kenneth R. Peterson, Ph.D.**, School of Medicine

# Faculty Investigator Research Awards

~Continued~

2004

**James P. Calvet, PhD**, School of Medicine  
**Wen Liu, PhD**, School of Allied Health  
**Randolph J. Nudo, PhD**, Center on Aging,  
School of Medicine  
**Karen A. Wambach, RN, PhD**, School of  
Nursing

2005

**Edward B. Stephens, PhD**, School of Medicine  
**Cynthia S. Teel, RN, PhD**, School of Nursing

2006

**Linda M. Frazier, MD, MPH**, School of Medicine  
**Barbara E. Langner, PhD, RN**, School of  
Nursing  
**Debra K. Sullivan, PhD, Rd, LD**, School of  
Allied Health  
**Yu-Jui Yvonne Wan, PhD**, School of Medicine

2007

**Nancy Dunton, PhD**, School of Nursing  
**Christophe Nicot, PhD**, School of Medicine  
**Irina V. Smirnova, PhD**, School of Allied Health  
**Joseph S. Tash, PhD**, School of Medicine

2008

**Shilpa J. Buch, PhD**, School of Medicine  
**Patricia S. Pohl, PT, PhD**, School of Allied  
Health  
**Kristine Williams, RN, PhD**, School of Nursing

2009

**Richard Barohn, MD**, School of Medicine  
**Sandra Bergquist-Beringer, RN, PhD**, School  
of Nursing  
**Hartmut Jaeschke, PhD**, School of Medicine  
**Hao Zhu, PhD**, School of Allied Health

2010

**Bruno Hagenbuch, PhD**, Pharmacology,  
Toxicology and Therapeutics  
**T. Rajendra Kumar, PhD**, Molecular and  
Integrative Physiology  
**Valmi Sousa, RN, PhD**, School of Nursing

2011

**Indranil Biswas, PhD, Microbiology, Molecular Genetics & Immunology**  
**Ubolrat Piamjariyakul, RN, PhD, School of Nursing**

## Chancellors Club Research Awards

1992

**Ruben D. Bunag, M.D.**

Department of Pharmacology, Toxicology and  
Therapeutics

1993

**Curtis D. Klaassen, Ph.D.**

Department of Pharmacology, Toxicology and  
Therapeutics

1994

**Jared J. Grantham, M.D.**

Department of Medicine

1995

**Sudhansu K. Dey, Ph.D.**

Department of Molecular and Integrative  
Physiology

1996

**Joseph F. Lutkenhaus, Ph.D.**

Department of Microbiology, Molecular Genetics  
and Immunology

1997

**David C. Morrison, Ph.D.**

Department of Microbiology, Molecular Genetics  
and Immunology

1998

**Laurence Y. Cheung, M.D.**

Department of Surgery

1999

**Joan S. Hunt, Ph.D.**

Department of Anatomy and Cell Biology

2000

**Glen K. Andrews, Ph.D.**

Department of Biochemistry and Molecular  
Biology

2001

**Michael J. Soares, Ph.D.**

Department of Molecular and Integrative  
Physiology

2002

**Paul F. Terranova, Ph.D.**

Department of Molecular and Integrative  
Physiology

2003

**Opendra (Bill) Narayan, DVM, Ph.D.**

Department of Microbiology, Molecular Genetics  
and Immunology

2004

**Paul D. Cheney, Ph.D.**

Department of Molecular and Integrative  
Physiology

2005

**Dale R. Abrahamson, PhD**

Department of Anatomy and Cell Biology

2006

**Peter G. Smith, PhD**

Molecular and Integrative Physiology

2007

**Randolph J. Nudo, PhD**

Molecular and Integrative Physiology

2008

**Carol E. Smith, RN, PhD**

School of Nursing Faculty

2009

**James P. Calvet, Ph.D.**

Department of Biochemistry and Molecular  
Biology

2010

**Yu-Jui Yvonne Wan, PhD**

Pharmacology, Toxicology & Therapeutics

2011

**Hartmut Jaeschke, PhD**

**Pharmacology, Toxicology & Therapeutics**

## 2011 FACULTY RESEARCH POSTER SESSION

*Kansas Life Science Innovation Center*

*Beller Conference Center*

*November 3, 2011*

*3:00 PM – 5:00 PM*

### Poster

- 1      **Fetal Cardiac Autonomic Control During Breathing Movements:  
The Effect of Maternal Exercise**  
*Kathleen Gustafson 2; Linda May ; Hung-Wen Yeh 1*  
*1 Biostatistics, 2 Hoglund Brain Imaging Center*
  
- 2      **Progressive neurochemical alterations and brain atrophy in a  
rTg4510 transgenic mouse model of tauopathy**  
*Phil Lee 1,2; Jieun Kim 1; Karen Duff 3; In-Young Choi 1,2,4*  
*1 Hoglund Brain Imaging Center, 2 Molecular and Integrative  
Physiology, 3 Columbia University, 4 Neurology*
  
- 3      **The development and evaluation of evidence-based telephone  
coaching program for family caregivers to improve heart failure  
(HF) self-management**  
*Ubolrat Piamjariyakul 2; Carol E. Smith 2; Christy Russell 1*  
*1 Mid America Cardiology (MAC), 2 School of Nursing*
  
- 4      Withdrawn
  
- 5      **In vivo measurements of cerebral ascorbate increases after  
systemic ascorbate infusion**  
*In-Young Choi 1, 2, 3; Wen-Tung Wang 1; Joanne Marcario 1; Mark  
Levine ; Phil Lee 1, 2*  
*1 Hoglund Brain Imaging Center, 2 Molecular and Integrative  
Physiology, 3 Neurology*
  
- 6      **Testing Media Interventions to Induce Positive Affective  
Responses in Persons with Dementia**  
*Kristine Williams 1; Ruth Herman 1*  
*1 School of Nursing*
  
- 7      **Neural bases of scaled tongue (nonspeech and speech) force**  
*Jeff Searl 1*  
*1 Hearing and Speech*

- 8        **In-Clinic vs. At-Home Voice Intensity Estimates in Parkinson Disease**  
*Jeff Searl 1; Angela Dietsch 1; Kelly Lyons 2; Rajesh Pahwa 2; Amy Seeland 1*  
*1 Hearing and Speech, 2 Neurology*
- 9        **Assessing Moral Distress in capstone Nursing Students**  
*David Martin 1*  
*1 School of Nursing*
- 10       **Output effects on hindlimb muscles assessed with spike triggered averaging of EMG activity from individual cortical cells**  
*Paul Cheney ; Paul Cheney 1; Heather Hudson 1; Hongyu Zhang 1; Gustaf Van Acker III 1; Will Messamore 1*  
*1 Molecular and Integrative Physiology*
- 11       **Aerodynamic and Stroboscopic Changes in Phonation During Semi-Occluded Vocal Tract Manuevers**  
*Jeff Searl 1; Troy Dargin 1*  
*1 Hearing and Speech*
- 12       **Successful Occipital Nerve Stimulation after C2 and C3 Neurectomy**  
*TALAL KHAN 1; EDWARD BRAUN 1; DAWOOD SAYED 1*  
*1 Anesthesiology*
- 13       **Radiofrequency ablation improves quality of life scores not only in patients with atrial fibrillation but their significant others too**  
*Subba Reddy Vanga 1; Mazda Biria 1; Jayasree Pillarisetti 1; Donita Atkins 1; Loren Berenbom 1; Martin Emert 1; Rhea Pimentel 1; Raghuveer Dendi 1; Sudharani Bommana 1; James Vacek 1; Buddhadeb Dawn 1; Dhanunjaya Lakkireddy 1*  
*1 Cardiovascular Research Institute*
- 14       **Impact of yoga on arrhythmia burden and quality of life (QoL) in patients with symptomatic paroxysmal atrial fibrillation - the Yoga My Heart Study**  
*Dhanunjaya Lakkireddy 1; Jayasree Pillarisetti 1; Donita Atkins 1; Martin Emert 1; Subba Reddy Vanga 1; Rhea Pimente 1; Caroline Murray 1; Sudharani Bommana 1; Kay Ryschon; Loren Berenbom 1; Buddhadeb Dawn 1; Raghuveer Dendi 1; Jeanne Drisko 2*  
*1 Cardiovascular Research Institute, 2 Internal Medicine*

- 15 **Why do we need mean aortic gradient in evaluation of aortic stenosis?**  
*Jayant Nath 1; Dhanunjaya Lakkireddy 1; Kamal Gupta 1; Buddhadeb Dawn 1*  
1 Cardiovascular Research Institute
- 16 **Post partum cardiomyopathy: predictors of recovery and current state of implantable cardioverter defibrillator use**  
*Jayasree Pillarisetti 1; Subba Reddy Vanga 1; Mazda Biria 1; Sudharani Bommana 1; Darbhamulla Nagarajan 1; Buddhadeb Dawn 1; Dhanunjaya Lakkireddy 1*  
1 Cardiovascular Research Institute
- 17 **Can CHADS2 score predict outcomes of radiofrequency ablation in patients with atrial fibrillation?**  
*Darbhamulla Nagarajan 1; Subba Reddy Vanga 1; Mazda Biria 1; Vineela Chikkam 1; Sunitha Ittaman 1; David Shanberg 1; Vinodh Jeevanantham 1; Loren Berenbom 1; Martin Emert 1; Rhea Pimentel 1; Raghuv eer Dendi 1; Sudharani Bommana 1; Buddhadeb Dawn 1; Dhanunjaya Lakkireddy 1*  
1 Cardiovascular Research Institute
- 18 **Characterization of radiofrequency ablation ventricular tachycardia in patients with cocaine use unresponsive to medical therapy**  
*Mazda Biria 1; Subba Reddy Vanga 1; Darbhamulla Nagarajan 1; Sudharani Bommana 1; Raghuv eer Dendi 1; Martin Emert 1; Loren Berenbom 1; Rhea Pimentel 1; Dhanunjaya Lakkireddy 1*  
1 Cardiovascular Research Institute
- 19 **Effects of adult bone marrow cell therapy on left ventricular volumes and function in patients with ischemic heart disease: a meta-analysis**  
*Matthew Butler 1; Vinodh Jeevanantham 1; Andre Saad 1; Buddhadeb Dawn 1*  
1 Cardiovascular Research Institute
- 20 **A study of diagnostic accuracy of two methods of calculating ankle brachial index to detect occlusive peripheral arterial disease**  
*Bassem Chehab 1; Sravanthi Nagavalli 2; Edgar Austria 2; Vinodh Jeevanantham 1; Rakesh Shrivastava 1; Mark Wiley 1; Peter Tadros 1; Jayant Nath 1; Buddhadeb Dawn 1; Kamal Gupta 1*  
1 Cardiovascular Research Institute, 2 Internal Medicine

- 21 **Role of side-to-side difference in renal resistive index as an index for clinical improvement in renal artery stenosis revascularization**  
*Andre Saad 1; Bassem Chehab 1; Vinodh Jeevanantham 1; Jayant Nath 1; Dhanunjaya Lakkireddy 1; Mark Wiley 1; Peter Tadros 1; Buddhadeb Dawn 1; Kamal Gupta 1*  
1 Cardiovascular Research Institute
- 22 **Predictors of readmission within 30 days of discharge in a Medicaid population**  
*Vinodh Jeevanantham 1; Buddhadeb Dawn 1*  
1 Cardiovascular Research Institute
- 23 **Radiofrequency ablation in patients with recurrent symptomatic atrial fibrillation and gastro esophageal reflux disease (GERD) / irritable bowel syndrome (IBS) - the heart to gut connection**  
*Dhssraj Singh 1; Darbhamulla Nagarajan 1; Jayasree Pillarisetti 1; Vineela Chikkam 1; James Vacek 1; Raghuveer Dendi 1; Rhea Pimentel 1; Loren Berenbom 1; Buddhadeb Dawn 1; Mojitaba Olayee 2; Dhanunjaya Lakkireddy 1*  
1 Cardiovascular Research Institute, 2 Internal Medicine
- 24 **Cardiac computed tomography: patient tolerance to high flow rate contrast injection comparing iopamidol 370 to iodixanol 320**  
*Matthew Good 2; Louis Wetzel ; Lucas Meek ; Doris Lenley 3; Wendy Allen ; Mike Feldkamp 3; Thomas Rosamond 1*  
1 Cardiovascular Research Institute, 2 Internal Medicine, 3 Mid America Cardiology (MAC)
- 25 **Pericardial fat volume is not associated with recurrence of atrial fibrillation after ablation**  
*Bashar Ababneh 2; Peter Tadros 1; Dhanunjaya Lakkireddy 1; Louis Wetzel ; Thomas Rosamond 1*  
1 Cardiovascular Research Institute, 2 Internal Medicine
- 26 **Use of context and cues in assessing persons with dementia**  
*Susan Jackson 1; Christine Birn 1; Holly Pyle 1*  
1 Hearing and Speech

- 27      **Cardiac resynchronization therapy prevents progression of renal failure in heart failure patients**  
*Vinodh Jeevanantham 1; David Shanberg 1; Andre Saad 2; Basil Abu-El-Haija 2; Buddhadeb Dawn 1; Dhanunjaya Lakkireddy 1*  
*1 Cardiovascular Research Institute, 2 Internal Medicine*
- 28      *Change to ePoster 8*  
**Use of percutaneous external circulatory support in patients undergoing ventricular tachycardia ablation - a multicenter experience**  
*Dhanunjaya Lakkireddy 1; Subba Reddy Vanga 1; Raghuveer Dendi 1; Buddhadeb Dawn 1*  
*1 Cardiovascular Research Institute*
- 29      **Deficiency of 25-hydroxy cholecalciferol worsens the risk factor profile but confers protection against atrial fibrillation - the vitamin-D paradox?**  
*Subba Reddy Vanga 1; James Vacek 1; Matthew Good 1; Jayant Nath 1; Sudharani Bommana 1; Darbhamulla Nagarajan 1; Buddhadeb Dawn 1; Dhanunjaya Lakkireddy 1*  
*1 Cardiovascular Research Institute*
- 30      **Evaluation of Apnea Tolerance in Bariatric Patients Following Rapid-sequence Induction of Anesthesia**  
*Mirsad Dupanovic 1; Amy Pichoff 1; Timothy Krause 1; Marty DeRuyter 1; Niazy Selim 3; Jonathan Mahnken 2; Terry Chaffee 1*  
*1 Anesthesiology, 2 Biostatistics, 3 Surgery*
- 31      **"Clinical Evaluation of a Comprehensive Preoperative Airway Exam Score; an Observational Study"**  
*Amy Pichoff 1*  
*1 Anesthesiology*
- 32      **Anesthetic Management of Successful Labor after Lateral Fontan Procedure**  
*Grace Shih 1*  
*1 Anesthesiology*

- 33 **Effect of chronic ingestion of a histamine H1 receptor (H1R) antagonist on the progression of atherosclerosis in the apolipoprotein-E null mouse**  
*Vineesh Raveendran 1, 2; Xiaoyu Tan 1, 2; Matthew Sweeney 1, 2; Ossama Tawfik 3; Daniel Stechschulte 1, 2; Kottarappat Dileepan 1, 2*  
*1 Adult Allergy/Clinical Immunology/Rheumatology, 2 Internal Medicine, 3 Pathology and Laboratory Medicine*
- 34 **Association of Elevated expression of Toll-Like Receptor-2 in carotid endarterectomy specimens with the severity of atherosclerotic disease**  
*Xiaoyu Tan 1, 2; George Cherian 3; Rachel Cherian 3; Daniel Stechschulte 1, 2; Kottarappat Dileepan 1, 2*  
*1 Adult Allergy/Clinical Immunology/Rheumatology, 2 Internal Medicine, 3 VA Medical Center*
- 35 **Comparison of Apnea Tolerance in Two Positions of Patients with BMI 30-40**  
*Seth Jacob 1*  
*1 Anesthesiology*
- 36 **Risk Factors for 30-Day Readmissions.**  
*Aroop Pal 1; Mohammad Taha 1*  
*1 Internal Medicine*
- 37 Withdrawn
- 38 **Exploiting Biological Networks to Improve Clinical Treatment of Ovarian Cancer**  
*Harsh Pathak 1*  
*1 Pathology and Laboratory Medicine*
- 39 **Histamine and lipopolysaccharide induce endothelial cell bone morphogenetic protein-2 expression**  
*Damandeep Walia 1, 3; Vineesh Raveendran 1, 2; Jianping Zhou 3; Mukut Sharma 3; Daniel Stechschulte 1, 2; Kottarappat Dileepan 1, 2*  
*1 Adult Allergy/Clinical Immunology/Rheumatology, 2 Internal Medicine, 3 VA Medical Center*

- 40 **Symptom Monitoring and Dependent Care during Cancer Treatments of Children and Adolescents in Thailand**  
*Ubolrat Piamjariyakul 1; Phoebe D. Williams 1*  
*1 School of Nursing*
- 41 **Impaired Iron Homeostasis and Beta-cell Lipotoxicity in Ncb5or-null Mice**  
*WenFang Wang 1; Ming Xu 1; Jennifer Jones 2; Hao Zhu 2*  
*1 Physical Therapy and Rehabilitation Science, 2 Clinical Laboratory Sciences*
- 42 **Life Course Trajectory of At-Risk Mothers for Child Maltreatment After Participation in a Longitudinal Prevention Study**  
*Elaine Domian 1; Kathleen Baggett 2; Judith Carta 2; Karen Wambach 1*  
*1 School of Nursing, 2 University of Kansas – Lawrence Campus*
- 43 **Concurrent Contributing Discoveries and Innovations in the Development of Trauma Anesthesia and Resuscitation**  
*Anthony Kovac 1*  
*1 Anesthesiology*
- 44 **Bias' in the Timely Treatment of Post-Operative Nausea and Vomiting with Anti-Emetic Medications**  
*Kenneth Kreisler, MD 1; Anthony Kovac, MD 1; Wendy Anderson, PhD 2*  
*1 Anesthesiology, 2 Biostatistics*
- 45 **Differences in infant fat mass based on maternal dietary consumption of linoleic acid**  
*Holly Hull 1; John Thornton; Charles Paley; Dymrna Gallagher; Khursheed Navder*  
*1 School of Allied Health*
- 46 **Telepsychology Approaches at an Academic Health Center**  
*Eve-Lynn Nelson 2, 3; Steve Lassen 3; Martha Barnard 3; Ann Davis 3; Jane Sosland 3; Matt Reese 1; Elizabeth Penick 4*  
*1 Center for Child Health and Development, 2 Center for Telemedicine & Telehealth, 3 Pediatrics, 4 Psychiatry and Behavioral Sciences*

- 47 **Characterization of Bioluminescent Osteosarcoma Orthotopic Model using Bioluminescent Imaging, Micro-computed Tomography and Histopathology**  
*Rama Garimella 1, 2, 3, 4; Rama Garimella 1, 2, 3, 4; Jeff Eskew 6; Priyanka Bhamidi 1; George Vielhauer 6; Yan Hong 5; Clarke Anderson 4; Ossama Tawfik 4; Peter Rowe 2, 5*  
*1 Dietetics and Nutrition, School of Allied Health, 2 Internal Medicine, 3 Orthopedic Surgery, 4 Pathology and Laboratory Medicine, 5 The Kidney Institute, 6 The University of Kansas Cancer Center*
- 48 **Determining the Most Appropriate Resource for Making Telephone Follow-Up After Hospitalization**  
*Mohammad Taha 1; Aroop Pal 1; Anita Gupta 1; Mike Glover 1; Brad Thompson 1*  
*1 Internal Medicine*
- 49 **Determining the Most Appropriate Resource for Making Telephone Follow-Up After Hospitalization**  
*Mohammad Taha 1; Aroop Pal 1*  
*1 Internal Medicine*
- 50 **Teaching Cardiopulmonary Examination using Standardized Patients to Third Year Medical Students**  
*David Becker 1*  
*1 Internal Medicine*
- 51 **TGF-beta-related signaling regulates stem cell heterogeneity**  
*Jay Vivian 1, 2*  
*1 Institute for Regenerative Biology and Medicine, 2 Pathology and Laboratory Medicine*
- 52 **A high fat diet attenuates dopamine function and impairs iron homeostasis in the substantia nigra.**  
*John Stanford 1*  
*1 Molecular and Integrative Physiology*
- 53 **The Novel Use of Hyperbaric Oxygen Therapy to Improve Umbilical Cord Blood Stem Cell Engraftment in Irradiated NOD/SCID Mice: What Did We Learn?**  
*Omar Aljitawi 1*  
*1 Internal Medicine*

- 54 **A 3-dimensional (3D) acute myeloid leukemia model for in vitro chemotherapy testing**  
*Omar Aljitiawi 1*  
*1 Internal Medicine*
- 55 **A Wharton's Jelly Mesenchymal Stromal Cell Derived 3D Osteogenic Niche Allows for Cord Blood Stem Cell Attachment**  
*Omar Aljitiawi 1*  
*1 Internal Medicine*
- 56 **A Wharton's Jelly Mesenchymal Stromal Cell Derived 3D Osteogenic Niche Allows for Cord Blood Stem Cell Expansion Using Cytokine-Free Culture Media.**  
*Omar Aljitiawi 1*  
*1 Internal Medicine*
- 57 **Interim Results of a Phase IIa, Open-Label, Randomized, Pharmacokinetic Comparative, Cross-Over Study of Melphalan HCl for Injection (Propylene Glycol-Free) and Alkeran for Injection for Myeloablative Conditioning in Multiple Myeloma Patients Undergoing Autologous Transplantation**  
*Omar Aljitiawi 1*  
*1 Internal Medicine*
- 58 **Developing a Diagnostic Test of Auditory Nerve Survival: Influence of Cochlear Outer Hair Cell Pathology.**  
*Mark Chertoff 1*  
*1 Hearing and Speech*
- 59 **Tamoxifen prevents ovarian apoptosis and follicle loss from cyclophosphamide in vitro.**  
*Brian Petroff 1*  
*1 Internal Medicine*
- 60 **GENOME-WIDE PROMOTER METHYLATION IN PREFRONTAL CORTEX OF ALCOHOLICS AND CONTROLS USING NIMBLEGEN DNA METHYLATION 2.1M ARRAYS**  
*Ann Manzardo 1; Merlin G. Butler 1*  
*1 Psychiatry and Behavioral Sciences*
- 61 **X CHROMOSOME INACTIVATION IN BLOOD AND PREFRONTAL CORTEX OF WOMEN WITH ALCOHOLISM**  
*Ann Manzardo 1; Merlin G. Butler 1*  
*1 Psychiatry and Behavioral Sciences*

- 62 **The effect of smoking on mid-pregnancy angiogenic marker levels among pregnancies ending in the delivery of small-for-gestational age (SGA) infants.**  
*Renee Mijal 1; Claudia Holzman ; Jian-Ling Wang ; Sarosh Rana ; S. Ananth Karumanchi ; Alla Sikorskii*  
1 Preventive Medicine and Public Health
- 63 **Effect of smoking on human sperm parameters is modified by glutathione S-transferase T1**  
*Renee Mijal 1; Wirth JJ; Messaros B; Diamond MP; Friderici K; Nummy-Jerginan K; Daly D; Puscheck E; Paneth N; Lu Q*  
1 Preventive Medicine and Public Health
- 64 **Preliminary One-Year Results of the RENEW Program for Weight Loss**  
*Jeannine Goetz 1; Edna Hamera 2; Angela Van Sciver 2*  
1 Dietetics and Nutrition, School of Allied Health, 2 School of Nursing
- 65 **Heat-Sensitive Serum Factors Promote the Uptake of Francisella tularensis and the Induction of Host Cell Death**  
*Michael Parmely 1; Susan Brock 1*  
1 Microbiology, Molecular Genetics and Immunology
- 66 **Anticancer efficacy of natural withanolides in triple negative breast cancer through down-regulation of BRCA-1, cell cycle arrest, and induction of apoptosis.**  
*Xuan Zhang 1; Abbas Samadi 1; Ridhwi Mukerji 1; Barbara Timmermann 2; Mark Cohen 1*  
1 Surgery, 2 University of Kansas – Lawrence Campus
- 67 **Modulation of Autophagy by Bile Acids in Hepatocytes**  
*Wen-Xing Ding 1*  
1 Pharmacology, Toxicology and Therapeutics
- 68 **PROSTAGLANDIN E2 ALTERS DRUG EFFLUX TRANSPORTERS IN HUMAN PLACENTAL CELLS**  
*Cliff Mason 1; Yafeng Dong 1; Carl Weiner 1*  
1 Obstetrics and Gynecology
- 69 **Diagnosis of Thyroid Cancer via an Interscalene Block**  
*Martin De Ruyter, MD 1; Nick Algarra 1*  
1 Anesthesiology

- 70 **THM1-null Mouse Model of Ciliopathy Manifests Renal Cysts, Retinal Defects and Obesity**  
*Pamela Tran 1; David Beier*  
*1 Anatomy and Cell Biology*
- 71 **Targeting pancreatic cancer stem cells by epigenetic regulation of miR-34a**  
*Sharmila Shankar 1*  
*1 Pathology and Laboratory Medicine*
- 72 **Arrow plots for meta-analyses of surrogate and clinical outcomes**  
*Robert Badgett 1, 2; Fanglong Dong 2; KoKo Aung*  
*1 Internal Medicine-Wichita, 2 Preventive Medicine and Public Health-Wichita*
- 73 **Designing and Validating a Search Engine for Retrieving Medical Knowledge**  
*Robert Badgett 1, 2; Daniel Dylla ; Susan Megison*  
*1 Internal Medicine-Wichita, 2 Preventive Medicine and Public Health-Wichita*
- 74 **Milestones-based curriculum revision in an internal medicine residency at a university medical center**  
*Becky Lowry 1; Sally Rigler 1, 2; Lisa Vansaghi 1; Jessica Kalender-Rich 1, 2; Elizabeth McClain 1*  
*1 Internal Medicine, 2 Landon Center on Aging*
- 75 **Role of a novel cytoskeletal protein, SPECC1L, in facial morphogenesis and malformation**  
*Irfan Saadi 1*  
*1 Anatomy and Cell Biology*
- 76 **Characterization of pupillary responses to assess diabetic autonomic neuropathy**  
*Jeff Radel 1, 2, 3; Patrick Zeller ; Symons Andrew 4*  
*1 Kansas Intellectual and Developmental Disabilities Research Center, 2 Molecular and Integrative Physiology, 3 Occupational Therapy Education, 4 Ophthalmology*
- 77 **Stimulus Parameters for Recording DPOAEs in Hearing-Impaired Ears**  
*Tiffany Johnson 1; Kelli Murphy 1*  
*1 Hearing and Speech*

## 2011 FACULTY RESEARCH ePOSTER SESSION

*Kansas Life Science Innovation Center*

*Beller Conference Center*

*November 3, 2011*

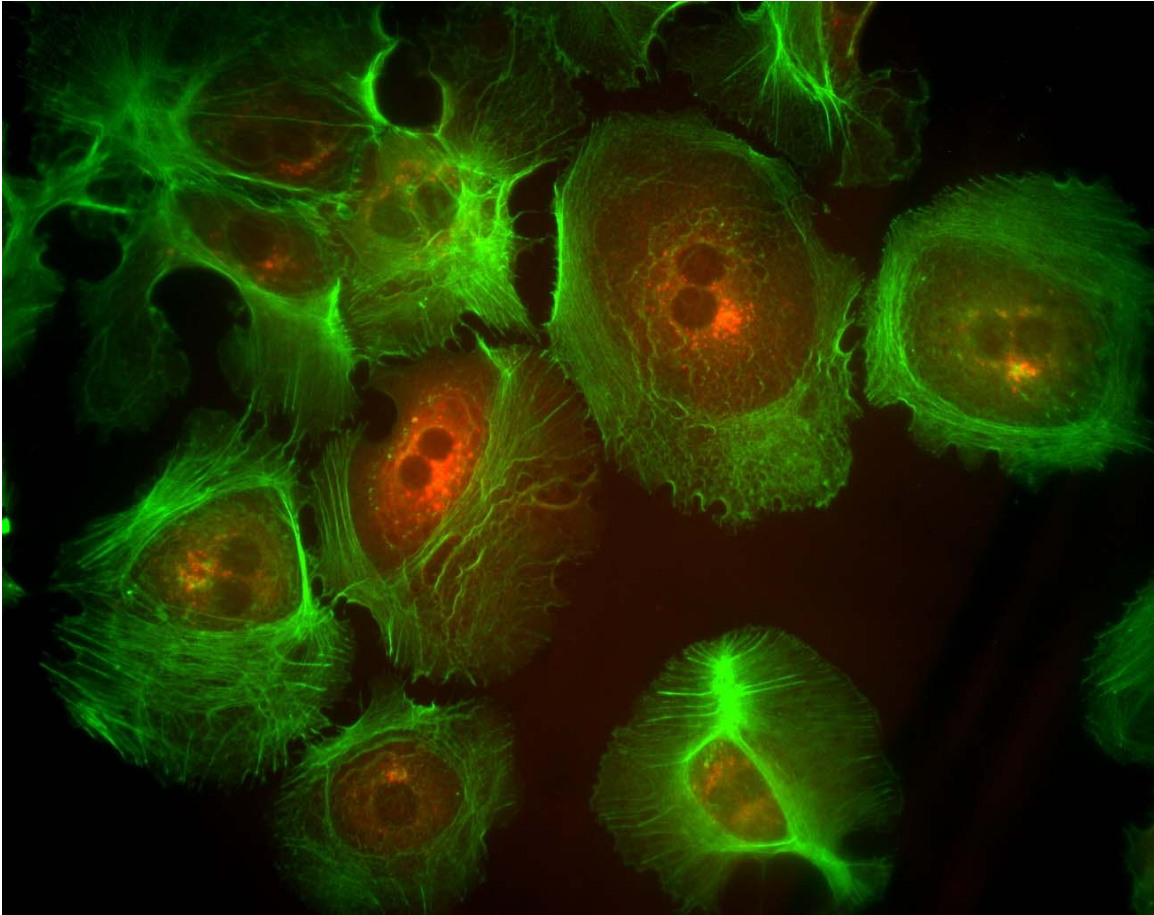
*3:00 PM – 5:00 PM*

### e-Poster

- 1 **Progressive neurochemical alterations and brain atrophy in a rTg4510 transgenic mouse model of tauopathy**  
*Phil Lee 1, 2; Jieun Kim 1; Karen Duff; In-Young Choi 1, 2, 3*  
*1 Hoglund Brain Imaging Center, 2 Molecular and Integrative Physiology, 3 Neurology*
  
- 2 **Transient Impact of Automated Glomerular Filtration Rate Reporting on Drug Dosing for Hospitalized Older Adults with Concealed Renal Insufficiency**  
*Jessica Kalender-Rich 2, 3; Sally Rigler 2, 3; Jonathan Mahnken 1; James Wetmore 2, 4*  
*1 Biostatistics, 2 Internal Medicine, 3 Landon Center on Aging, 4 The Kidney Institute*
  
- 3 **Effects of uncontrolled hyperglycemia from onset to chronic conditions on neurochemical profile and glucose transport in the rat brain in vivo by 1H MRS at 9.4 T**  
*In-Young Choi 1, 2, 3; Wen-Tung Wang 1; Irina Smirnova 4; Phil Lee 1, 2*  
*1 Hoglund Brain Imaging Center, 2 Molecular and Integrative Physiology, 3 Neurology, 4 Physical Therapy and Rehabilitation Sciences*
  
- 4 **Pharmacologic ascorbate synergizes with gemcitabine in pre-clinical models of pancreatic cancer**  
*Qi Chen 1*  
*1 Pharmacology, Toxicology and Therapeutics*
  
- 5 **Effects of Adult Bone Marrow Cell Therapy on Left Ventricular Remodeling and Clinical Outcomes in Patients with Ischemic Heart Disease – A Meta-analysis**  
*Vinodh Jeevanantham 1; Matthew Butler 2; Andre Saad 2; A Abdel-Latif ; Buddhadeb Dawn 1*  
*1 Cardiovascular Research Institute, 2 Internal Medicine*

- 6        **Connections Centralized Screening and Referral System: Health Screening Component**  
*Heather Schrotberger 1; Martha Staker 1; Leslie Warlen 1*  
*1 Pediatrics*
- 7        **The Impact of Bilateral Subthalamic Nucleus Deep Brain Stimulation on Non-Motor Symptoms of Parkinson's Disease.**  
*Jules Nazzaro 2; Rajesh Pahwa 1; Kelly Lyons 1*  
*1 Neurology, 2 Neurosurgery*
- 8        **Use of percutaneous external circulatory support in patients undergoing ventricular tachycardia ablation - a multicenter experience**  
*Dhanunjaya Lakkireddy 1; Subba Reddy Vanga 1; Raghuveer Dendi 1; Buddhadeb Dawn 1*  
*1 Cardiovascular Research Institute*
- 9        **Farnesoid X Receptor Knockout Mice Develop Spontaneous Hepatocellularcarcinoma Independent of Small Heterodimer Partner**  
*Grace Guo 1; Guodong Li 1; Yan Zhu 1; Li Wang 1*  
*1 Pharmacology, Toxicology and Therapeutics*
- 10       **A Preliminary Study of Communication Disorders in Adults with HIV/AIDS**  
*K James Kallail 1; David Downs ; Julie Scherz ; Donna Sweet ; Rosalee Zackula 2*  
*1 Internal Medicine-Wichita, 2 Research-Wichita*
- 11       **Novel withanolides downregulate mTOR pathway**  
*Abbas Samadi 1, 3; Dr. Mark Cohen 2, 3; Zhang Xuan 3; Joseph Bazzill 3*  
*1 Biochemistry and Molecular Biology, 2 Pharmacology, Toxicology and Therapeutics, 3 Surgery*
- 12       **Induction of Fetal Hemoglobin by Transcriptional Co-Activators MTF-1 and TSPYL1**  
*Kenneth Peterson 1, 2; Flavia Costa 2; Halyna Fedosyuk 2; Renee Neades 2; Johana Bravo de los Rios 3; Lesya Zelenchuk 4; Andrea Fonteles 2; Prarthana Dalal 2; Gabriella Maniscalco 2*  
*1 Anatomy and Cell Biology, 2 Biochemistry and Molecular Biology, 3 Preventive Medicine and Public Health, 4 The Kidney Institute*

- 13      **The Impact of Maternal Nutrient Reduction (MNR) on Placental mTOR and Signaling Pathways in the Baboon**  
*Juan Arroyo ; Amanda Graham 1; Peter Nathanielz ; Henry Galan*  
*1 Obstetrics and Gynecology*
- 14      **Inhibitors of Advanced Glycation/Lipoperoxidation End Products (AGE/ALEs) Improve Cystic Disease**  
*Robin Maser 1; Dianne Vassmer 1*  
*1 Clinical Laboratory Sciences*
- 15      Withdrawn
- 16      **Evaluating the Effectiveness of a Contextually Relevant Sensory Processing Intervention**  
*Winnie Dunn 1; Jane Cox 1; Lauren Foster 1; Lisa Mische-Lawson*  
*1; Jennifer Tanquary 1*  
*1 Occupational Therapy Education*
- 17      **Combining GroEL chaperonin with Label free techniques to detect protein stabilizers**  
*Subhashchandra Naik 1; Wesley McGinn-Straub, Na Zhang 2;*  
*Phillip Gao 2; Mark T. Fisher 1*  
*1 Biochemistry and Molecular Biology, 2 University of Kansas Lawrence*



**Hartmut Jaeschke, PhD**  
**Pharmacology, Toxicology & Therapeutics,**  
**School of Medicine**