

# IN THE CENTER

20 NOVEMBER 2003 • VOLUME 5 • NUMBER 47

## Expanded Cancer Center, Breast Center Formally Open



**A** Nov. 18 reception marked the formal opening of The University of Kansas Hospital's expanded outpatient Cancer Center and new Breast Center – a combined 30,000-square-foot facility.

The Cancer Center, located just off the hospital's lobby, has more than doubled in size to accommodate the hospital's increase in patient volume. The state-of-the-art diagnosis and treatment center features 12 new examination rooms, 19 private treatment rooms, an enlarged cancer pharmacy and easy access to support services.

"This expansion provides not only additional space and technology for cancer patients but also a friendly and comfortable atmosphere," said Irene Cumming,

president and chief executive officer of the hospital.

Cumming also noted this was the first major hospital project in which private fundraising made a significant impact. She recognized sponsors and patrons of the annual Treads and Threads gala at Kansas Speedway for raising more than half a million dollars over the past two years to support cancer services at the hospital. Funds from the event were used to develop a Patient Resource Center that provides vital educational services for cancer patients and their families and to purchase a hand-held mammotome for same-day breast biopsies in the Breast Center.

The new 4,000-square-foot Breast Center brings all breast cancer diagnostic services together in one specially designed area. It features a new digital mammography unit and computer-assisted detection technology that offers patients the latest advances in cancer

Celebrating the opening of the Cancer Center and the Breast Center were Irene Cumming, hospital president and chief executive officer, Jeff Wright, executive director, Cancer Services, Stephen Williamson, MD, medical director, Cancer Center, Tajquah Hudson, senior vice president, Business and Strategic Development, and Chris Delaney, co-project director for the expansion (with Wright).

screening. Purchase of the digital mammography system was made possible by funds raised at the Nebraska Furniture Mart gala.

In his remarks, Steven Williamson, MD, medical director of the Cancer Center, thanked his entire staff – physicians, nurses, pharmacists, clerks and volunteers – "everyone who touches the lives of our patients."

He added, "We have new space and new equipment but the same commitment to working together across specialties to provide patients with the best medical care possible. Oncologists and radiation oncologists working with surgeons, radiologists, pathologists and highly skilled nurses give us a team approach. The design of the space fosters this team approach."

### Inside

- Page 2 Faculty Research Day
- Page 3 KU First Campaign  
KU Cares Cart
- Pages 4-5 Front & Center
- Page 6 Atkinson Book  
SoN Scholarship
- Page 7 What's News
- Page 8 Classifieds, etc.

# Faculty Research Day Honors Research Excellence

Faculty Research Day on Nov. 6 celebrated research at the University of Kansas Medical Center and recognized excellent work with the presentation of several awards.

Oprenda “Bill” Narayan, DVM, PhD, a professor in the School of Medicine’s Department of Microbiology, Molecular Genetics and Immunology, was the recipient of the prestigious Chancellors Award for his work in developing an HIV vaccine. The Chancellors Award includes a \$5,000 cash prize. (Complete story appeared in the Oct. 30 issue of *In The Center*.)

has important implications for hereditary blood diseases such as sickle-cell anemia, which the Centers for Disease Control estimates affects more than 50,000 Americans.

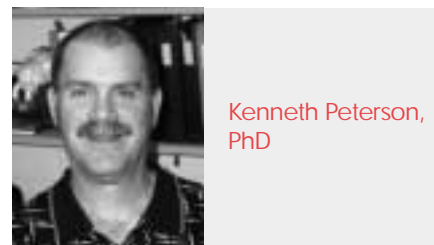
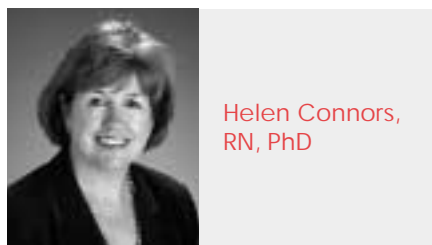
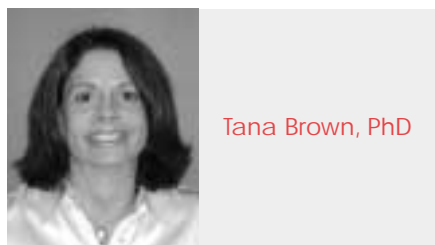
Peterson’s fellow honorees, Brown and Connors, study schizophrenia and medical education, respectively.

One of the highlights of Faculty Research Day was the presentation of Kansas Biomedical Research Infrastructure Network (K-BRIN) scholar awards. Receiving the awards honoring excellence in research, teaching and service were:

given to: Helen Ilc, Department of Preventive Medicine; Rosa Meagher, Department of Pharmacology; and Carol Anderson, Department of Speech, Language and Hearing.

“Faculty Research Day symbolizes the high quality of research at the Medical Center,” said Thomas Noffsinger, vice chancellor for Research Administration. Faculty Research Day began in 1982 as a way to foster collaboration among researchers. During this year’s event, 82 research presentations were displayed by KUMC faculty.

According to Noffsinger, the



Three other KUMC scientists won Investigator Awards, each worth \$1,000. They were: Catana (Tana) Brown, PhD, associate professor, Department of Occupational Therapy Education, School of Allied Health; Helen Connors, RN, PhD, professor, School of Nursing, and associate dean for Academic Affairs; and Kenneth Peterson, PhD, professor, Department of Biochemistry and Molecular Biology, SoM.

“It’s the recognition from your peers that’s important,” said Peterson. His research on the regulation of the human beta-globin gene

Leslie Heckert, PhD, associate professor, Molecular and Integrative Physiology; Raj Pahwa, MD, associate professor, Neurology; and Douglas Wright, PhD, associate professor, Anatomy and Cell Biology.

Each won \$20,000, half of which comes from K-BRIN and half from the executive vice chancellor’s office. The awards are used for academic initiatives.

For the first time this year, Faculty Research Day also recognized non-scientist research support staff. Research Administrator Awards, worth \$350 each, were

Medical Center won \$71 million in external grants for research this year, compared to just \$4 million in 1982. Narayan’s research alone is funded by more than \$2 million in outside grants.

“People the world over who suffer from debilitating illnesses will be touched by what happens here,” said Barbara Atkinson, MD, dean of the SoM and vice chancellor for Clinical Affairs. “The spirit of discovery we celebrated today will lead, someday, to cures.”

More photos on page 5.

# KU First Family Campaign

## Scholarship Memorializes Husband

Lou Loescher-Junge, assistant dean for the Schools of Allied Health and Nursing, is troubled by the financial strain shouldered by students pursuing health care careers.

“More students are having to work in addition to going to school,” she said. “Some students also have families, so they are pulled in many directions.”

To help students receive scholarship support now and in the future, Loescher-Junge established the David A. Junge Memorial Scholarship fund at the Kansas University Endowment Association. Beginning in 2004, the annual scholarship will be awarded alternately to Nursing and Allied Health students.

Named for her late husband, the scholarship fund was established through annual and planned gifts made by Loescher-Junge, as well as

memorial contributions.

“When my husband was in the hospital, he was most grateful for the nursing staff and the allied health professionals who cared for him,” Loescher-Junge said. “So I set up a memorial fund that would provide scholarships for students in both schools. I can’t imagine there won’t always be a great need for them.”

Loescher-Junge’s gift counts toward the \$500 million goal of KU First: Invest in Excellence, the largest fund-raising campaign in KU history. KU Endowment is conducting the campaign through 2004 to raise funds for scholarships, fellowships, professorships, capital projects and program support for the university, and capital projects, program support and patient services for the hospital.

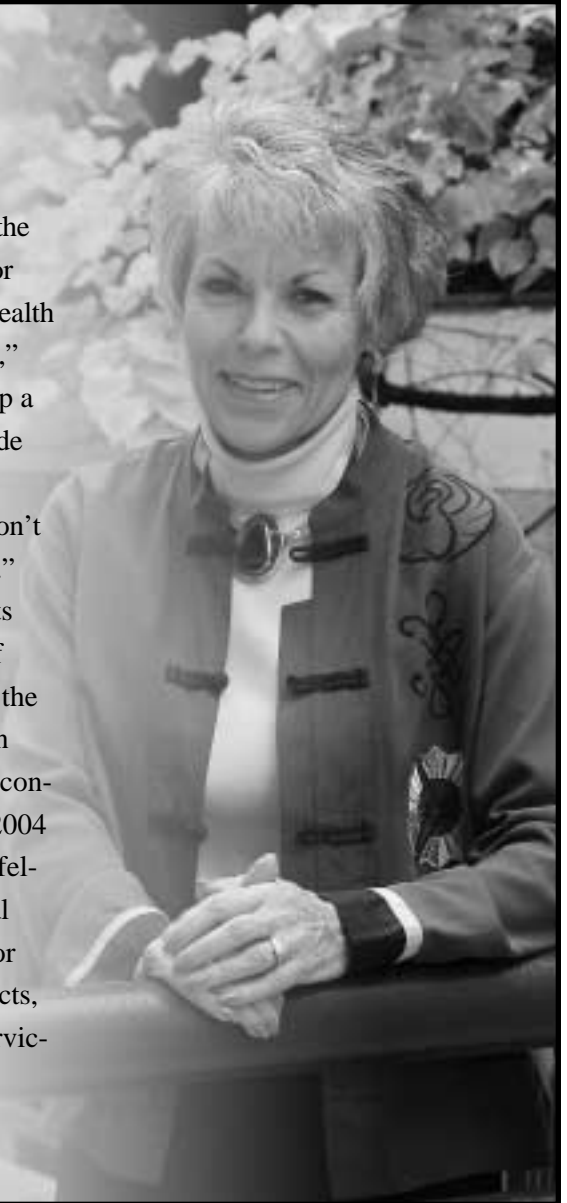


Photo by Shari Hartbauer

## KU Cares Cart Provides Books, Magazines

Hospital patients, their family members and visitors have a new source for reading material – a roving book cart.

Called the KU Cares Cart, it is staffed by volunteers who move through the nursing units and waiting rooms, offering a selection of paperback books and magazines. Cheryl Pemberton, volunteer coordinator of Volunteer Services, came up with the idea.

“Not only do the volunteers provide a terrific service, but volunteers with nontraditional schedules can staff the cart,” Pemberton said.

Volunteer Services circulates the cart during evening hours and on weekends, times when volunteer opportunities have been limited in the past.

Employees, staff and students can help by donating reading materials for the KU Cares Cart.

Popular fiction paperbacks and magazines in good condition are needed. Weekly magazines should not be more than one month old, and monthlies not more than a year old. Donations can be dropped off at the Volunteer Office, G300b, just inside the cafeteria.

If you have questions or know someone who would like to volunteer, contact Pemberton at 8-6560.

## Cancer Research Benefit

Tastevin 2003, the annual wine dinner and auction to benefit the Kansas Cancer Institute (KCI), raised more than \$55,000. The Oct. 11 event was hosted by the Vin Kansas City Committee to support local cancer research programs. Attending the event were (from left): James Thomas, MD, Vascular/General Surgery; William Jewell, MD, KCI director; Patricia Thomas, MD, professor and chair of Pathology and Laboratory Medicine; and her husband, Marty Haynes.



## Wings of Hope

The fourth annual Wings of Hope, a holiday open house and fundraiser for breast cancer research, was held at Stuff in the Brookside Shops on Nov. 8. The event raised more than \$1,700 for the Susan Henke Miller Breast Cancer Research Fund at the Kansas Cancer Institute. Miller (left) was greeted by sisters and Stuff co-owners, Casey and Sloane Simmons.



## Front & Center

## Street Fair Gift

Eddy Hart (right), co-president of the KUMC Student Governing Council, presented a check for \$515 to Sharon Wilson of Friendship Inn, which provides reduced cost housing to families of patients at The University of Kansas Hospital. The money was raised during the fall 2003 KUMC Street Fair.



## K-BRIN Award Winners

One of the highlights of Faculty Research Day on Nov. 6 was the presentation of Kansas Biomedical Research Infrastructure Network (K-BRIN) scholar awards. Receiving the awards honoring excellence in research, teaching and service were: Leslie Heckert, PhD (below), associate professor, Molecular and Integrative Physiology, presented by department chair Paul Cheney, PhD; Raj Pahwa, MD (right), associate professor, Neurology, presented by department chair Richard Barohn, MD; and Douglas Wright, PhD (below right), associate professor, Anatomy and Cell Biology, presented by department chair Dale Abrahamson, PhD.



Richard Barohn, MD, and Raj Pahwa, MD



Paul Cheney, PhD, and Leslie Heckert, PhD



Dale Abrahamson, PhD, and Douglas Wright, PhD

## HIPAA Compliance Q & A

*This is the first in a continuing series of articles answering specific questions about the Health Insurance Portability and Accountability Act. The law safeguards patient health information, simplifies health care administration and makes health insurance portable for people changing jobs or health plans.*

**Q:** There was a HIPAA deadline dealing with Transactions and Code Sets on October 16, 2003. Did we meet the deadline?

**A:** The University of Kansas Hospital started transmitting HIPAA-compliant Transactions and Code Sets to our clearinghouse on October 15, the day before the deadline. These are used to submit billing claims to

payers. Providers (hospitals and physicians) are paid according to the Transactions and Code Sets submitted to the payer (Medicare, Medicaid, private insurance) for the care provided.

Our HIPAA effort for Transactions and Code Sets has been successful so far, and there will be more deadlines in the future. The hospital has the people and systems in place to meet them.

## Atkinson Book Praised, Book-signing Planned

The second edition of the “Atlas of Diagnostic Cytopathology” by Barbara Atkinson, MD, KU School of Medicine executive dean and vice chancellor for Clinical Affairs, arrived in bookstores this month to critical acclaim.

To mark the book’s publication, Donald Hagen, KUMC executive vice chancellor, is hosting a book-signing and reception for Atkinson on Monday, Nov. 24, noon-1 p.m., in Murphy Lobby.

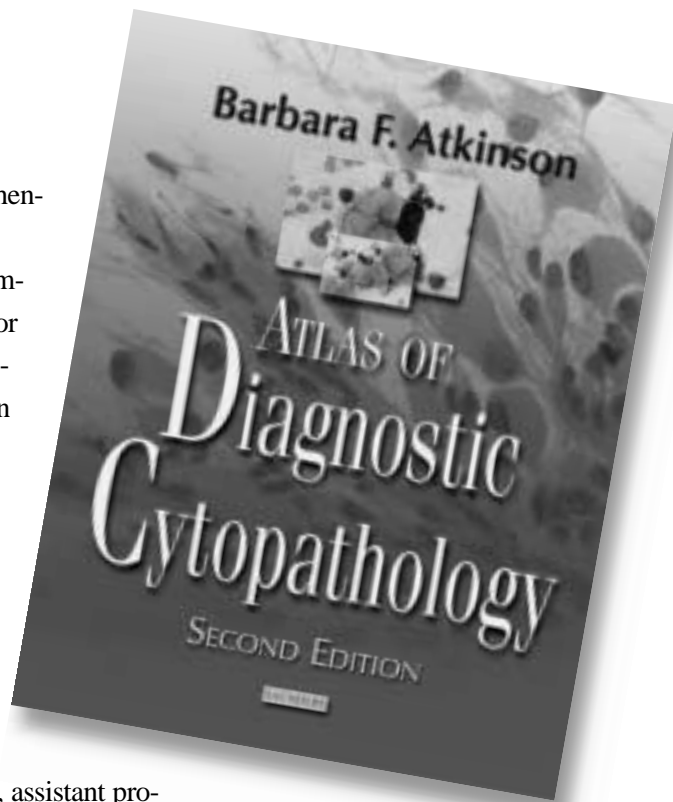
The “Atlas” is the standard sourcebook for aspiration and exfoliative cytology and its impact on the practice of anatomic pathology. (Cytology is the study of cells.) It contains more than 1,700 full-color illustrations. Each chapter discusses the challenges of a specimen site, describes the diagnostic criteria and differential diagnosis, and explains how the diagnosis is reached.

*Modern Pathology* praised the

book as “... comprehensible enough for the cytologic novice, comprehensive enough for the seasoned pathologist. The organization of individual chapters is inspired.”

One of those individual chapters is co-authored by Patricia Thomas, MD, chair of Pathology, and Fang Fan, MD, PhD, assistant professor, Pathology. The 856-page book sells for \$249.

“I would like to heartily thank the many fellows, residents, cytopathologists, cytotechnologists and cytotechnology students with whom I have worked,” said Atkinson. “They are the ones who really taught me cytopathology. To paraphrase a cliché, you learn best



by being forced to explain ‘why.’

“You may think you know, but teaching is the final test. Interacting with smart, probing students, residents and fellows is the final test of knowledge and challenge to further development. I hope that the ‘Atlas of Diagnostic Cytopathology’ succeeds in explaining some of those ‘whys.’”

## SoN Student Receives Scholarship

KU School of Nursing student Menneka J. Scott received a \$1,000 scholarship from the Greater Kansas City Chapter of the National Black Nurses Association. Scott will graduate in May 2004 with a bachelor of science in nursing degree and plans to become a

family nurse practitioner.

Each year, the Greater Kansas City Black Nurses Association gives a scholarship to a nursing student in an accredited nursing school based on community service and a written essay on why the applicant wants to be a nurse.



Menneka J. Scott

# WHAT'S NEWS

AT KUMC

## Book Fair

The Books Are Fun book fair, sponsored by the Division of Student Services, will be held in Stoland Lounge on the following dates:

- Monday, Nov. 24, 10 a.m.-4 p.m.
- Tuesday, Nov. 25, 7 a.m.-4 p.m.
- Wednesday, Nov. 26, 7 a.m.-2 p.m.

You may select from hundreds of new gifts and books, including cook-books, special interest, children's, art,

hobbies, crafts and more. There will be more than 150 titles. Savings are up to 70 percent off retail prices.

All proceeds benefit students currently enrolled at KUMC. For more information about the book fair, e-mail [tbrown4@kumc.edu](mailto:tbrown4@kumc.edu).

## Visiting Scholar Series

The Visiting Scholar Lecture Series will present Ronald LaPorte, PhD, speaking on "Globalization of Prevention." His presentation will be held Wednesday, Dec. 3, noon-12:50 p.m., B018, School of Nursing.

LaPorte is a professor in the Department of Epidemiology, School of Public Health, University of Pittsburgh. He is the founder and director of the Public Health

Supercourse, a resource databank of educational materials for public health professionals and educators. He has expertise and National Institutes of Health funding in Internet applications for epidemiology and diabetes outcomes.

The event is sponsored by the Department of Preventive Medicine and Public Health, Center of Excellence in Minority Medical Education: Program in Disparities and Diversity in Health and NIH-K30 Clinical Research Curriculum Program. It is co-sponsored by the Cancer Prevention, Control and Population Sciences Program, Kansas Cancer Institute.

Lunch will be provided for the first 40 attendees.

---

## Doctor Will Lead National Medical Specialty Society

Donna Sweet, MD, professor, Internal Medicine, KU School of Medicine-Wichita, has been elected chair-elect for the Board of Regents of the American College of Physicians (ACP). The Board of Regents is the main policy-making body of the nation's largest medical specialty society.

She will assume duties as chair-elect in April 2004 and become chair of the ACP Board of Regents in April 2005.

"I see my task as guiding the ACP as we try to revitalize the profession for practicing internists and convince medical students that this is a good field to enter," she said.

The ACP has approximately 115,000 members – physicians in

general internal medicine and related subspecialties, as well as medical students. Its mission is to enhance the quality and effectiveness of health care by fostering excellence and professionalism in the practice of medicine.

Sweet received her medical degree from the University of Kansas School of Medicine in 1979 and completed her residency in internal medicine at the Wichita campus in 1982. She then joined the Department of Internal Medicine at the School of Medicine-Wichita as an instructor, rising through the ranks to become professor in 1993.

An internationally renowned specialist in HIV/AIDS, Sweet was a founder and currently serves as prin-



Donna Sweet, MD

cipal investigator for the Kansas AIDS Education Training Center. She also serves as director and principal investigator for the medical school's Ryan White III Comprehensive AIDS Resources program, the only program of its kind in Kansas.

# Classifieds, etc.

## Automotive:

2000 Pontiac Bonneville SSEi, fully loaded, all options, fighter-pilot-style heads-up display, factory chrome mags, OnStar, power sun/moon roof, gray leather interior, heated electronic seats/mirrors, traction control, power windows/locks, keyless remote, alarm, supercharged 3.8L V6 (240hp), 4-wheel power disc brakes, fog lights, 57.5 K, well maintained. 816-942-2715.

1998 Volvo S70, excellent condition, 40K, silver w/spoiler, gray leather interior, heated seats, individual heat/cool controls, sunroof, power locks/windows/doors, stereo CD/radio, \$13,999 OBO. 816-960 7287.

1990 Ford LX Mustang, hatchback, red, new 302 GT-40 crate engine, 8K, 17" Cobra R wheels, exhaust MAL, crawl hood 2 1/2", trick-flow 70 mm intake, \$7,800. 913-268-9608.

1987 Acura Legend, needs transmission, owner moving so make offer. 913-631-0578.

## For Sale:

Remodeled home, 2340 S. Vermont, lowest interest rates, spacious, fenced, 3BR, 1 1/2 BA, 7 rooms, 13'x10' shed, attic fan, window A/C, stove, refrigerator, Kansas City School District, \$60,000. 816-461-0420.

Sleeper sofa and matching loveseat, neutral colors, \$200; 16' trailer, no title, excellent for farm use, \$350 OBO; side-by-side refrigerator, biscuit, \$200. 816-763-1082.

Sofa and loveseat, cobalt blue and black, good condition, \$200 OBO. 913-829-1124 or 913-634-7373.

Yamaha P22 piano, studio, oak, excellent condition, beautiful tone, \$3,300. 913-962-0986 or 913-980-6455.

"Star Trek the Next Generation," every episode on tape in original Paramount box, perfect condition, took 9 years to collect, \$1,755 new, make offer. 913-631-0578.

Sony 13" color TV, \$15; Evenflo Comfort Touch car seat, excellent condition, paid \$100, used 1 year, \$45. 913-831-7487.

Antique oak wardrobe, 7' tall, drawers built into cabinet for storage, shelf for TV/stereo, perfect for bedroom or living room. \$600. 816-276-3799.

## To Rent:

Home to rent or lease with option to buy in Lee's Summit, Winterset, 3,000-sq.-ft. split level, 3-car garage, walk-out basement, fenced yard, \$1,950/mo. 816-347-8034.

2 BR, 1 BA house, Shawnee Mission Parkway/I-35 area, near Shawnee Mission North High School, appliances, fenced yard, cable/satellite ready, garage. 913-226-8338.

2 BR house, 2009 W. 42 Ave., walk to KUMC, basement, fenced yard, hardwood floors, C/A, stove, refrigerator, \$585/mo. 913-722-0505.

## Wanted:

Carpooler for short ride from KUMC to Westport area, 8 a.m.-4:30 p.m. work schedule on Tuesday, Thursday and Friday. 816-694-3205.

## Free to Good Home:

Australian red heeler, 3 years old, outdoor dog, great personality, named Blaze. 816-304-8908.

## IN THE CENTER

**Irene M. Cumming**  
President and CEO  
The University of  
Kansas Hospital

**Donald Hagen, MD**  
Executive Vice Chancellor  
University of Kansas  
Medical Center

Barbara Jaekel, Editor  
Val Renault, Senior Writer  
Kevin White, Senior Graphic Designer  
Jan Lewis, Editorial Manager  
Mary King, Communications Services Director

*In The Center* is a weekly employee publication published by The University of Kansas Hospital's Communications Services Department. Send story ideas to Barbara Jaekel, Bldg. 48, Room 1070, or e-mail [bjael](mailto:bjael) or call 8-1074.

**Ad Policy** - Send or bring your ad, 30 words or less, to Bldg. 48, Room 1070, fax to 8-1063, or e-mail [bjael](mailto:bjael) by noon Thursday of the week before it is to run. Ads run free of charge for employees, students and volunteers. All ads must include the advertiser's name and work extension (or student box number) for verification. Only home phone numbers—no pager numbers or work extensions—will be published. Please include area code. No ads for commercial services or pets for sale will be accepted. Ads will not be taken by telephone. Ads may be held a week if space is limited.

# Coming Up

Thursday, Nov. 20

- Great American Smokeout "Cold Turkey Trot," Kirmayer Fitness Center, FREE admission all day to university and hospital employees.

Friday, Nov. 21

- Usborne Book Fair to benefit Reach Out and Read Kansas City, 7 a.m.-5 p.m., Wyandotte Room.
- KUMC Auxiliary jewelry sale, 7 a.m.-3 p.m., outside cafeteria.
- Wellness Program, "Sudden Cardiac Arrest," Robert Herman, MD, noon-1 p.m., Room 145, Landon Center.
- Neurology Grand Rounds, "High Dose Intravenous Methotrexate in MS," Vernon Rowe, MD, 8:30-9:30 a.m., 1563a hospital.
- Psychiatry Grand Rounds, "Looking at ADHD," Mark Romereim, MD, 10:30 a.m.-noon, Sudler Auditorium.

Saturday, Nov. 22

- Saturday Morning at KU Med, "Digestive Disorders in Adults and Children," Richard McCallum, MD, and Paul Hyman, MD, 8:30 a.m.-noon, Battenfeld Auditorium.

Monday, Nov. 24

- "Atlas of Diagnostic Cytopathology" book signing, Barbara Atkinson, MD, noon-1 p.m., Murphy Lobby.