

IN THE CENTER

23 OCTOBER 2003 • VOLUME 5 • NUMBER 43

Hospital Employee Shares Breast Cancer Experience



CeCe Pivonka-Culver

Throughout October – Breast Cancer Awareness Month – people wear pink ribbons to honor survivors, remember those lost to the disease and support the search for a cure. The American Cancer Society estimates that 211,300 women will learn they have breast cancer this year, and 1,300 men will get the same news. In this profile, a hospital employee shares her journey with the disease.

There's one thought that never crossed the mind of CeCe Pivonka-Culver since she was diagnosed with breast cancer: "Why me?"

"That question just didn't come up," she said, although her diagnosis in April and the quick progression to a mastectomy in June have often seemed surreal.

In some ways, she was mentally prepared. Eleven years earlier, Pivonka-Culver was diagnosed with fibrocystic disease of the breast. She had biopsies in 1992 and 1998 that were benign. She was diligent about getting her annual mammograms.

Then she met with Carol Connor, MD, surgical breast specialist at The University of Kansas Hospital, to learn more about breast cancer services the hospital offers. As a member of the hospital's Marketing staff, Pivonka-Culver serves as a liaison to referring physicians in Kansas and Missouri, keeping them informed of ways the hospital can meet their patients' needs.

During the meeting, Connor discussed a new technique she was performing – the use of cryoablation for women with fibroadenomas. In this procedure, a benign fibrocystic lesion is frozen, then simply dissolves over time.

Pivonka-Culver volunteered herself for the procedure, but her preparatory exam and biopsy showed something else. Connor performed a diagnostic lumpectomy, which revealed that this time Pivonka-Culver did have breast cancer – a type known as ductal carcinoma in situ (DCIS).

"Within days, Dr. Connor presented my case at the weekly breast tumor conference," Pivonka-Culver said. "A multidisciplinary group of experts discussed my situation and gave input on the best treatment options for me."

Unfortunately, that meant a single mastectomy. But Connor and Lori Ranallo, RN, her nurse clinician, treated her with the utmost compassion during this time.

"I was in awe of them," said Pivonka-Culver. "As an employee of the hospital, I believed it was the best place for care. Now I know from experience – I wouldn't go anywhere else."

Because the cancer had not spread to her lymph nodes, Pivonka-Culver did not need chemotherapy or radiation therapy. She was able to begin reconstructive surgery the day of her mastectomy.

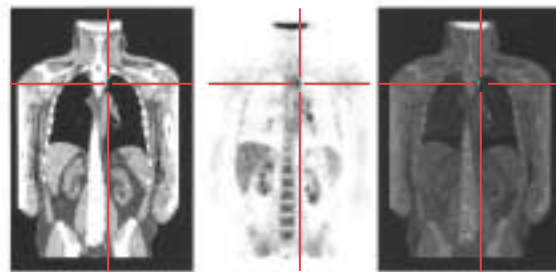
"I was out of the hospital in less

continued on page 2

Inside

- Page 2 PET/CT Scanner
- Page 3 Nurse Practice Council
- Pages 4-5 Front & Center
- Page 6 Internal Medicine Clinic Fire Prevention
- Page 7 What's News
- Page 8 Classifieds, etc.

Hospital Announces First PET/CT Scanner in Region



The University of Kansas Hospital will soon add a high-tech combination PET/CT scanner to its comprehensive array of radiological equipment, making it the leading facility in medical imaging in the region.

PET/CT blends the sharp anatomical detail of a high-performance 16-slice computed axial tomography (CT) scanner with positron emission tomography's (PET) ability to measure tissue metabolic activity. While the hospital has been using computers to match separate PET and CT images, the combination scanner puts the two images together simultaneously, creating a precise diagnostic tool for physicians.

"The PET/CT will help us to localize cancer and other abnormalities with more speed and clarity than ever before. This means more timely and targeted treatment for our patients," said Reginald W. Dusing, MD, radiologist and medical director of the hospital's nuclear medicine program.

The PET/CT will be supported by the region's only hospital-based cyclotron, which produces the isotopes necessary for patients undergoing scanning procedures.

"There are specialized tests for cancer and cardiac patients that require PET radiopharmaceuticals to be given to patients within minutes after the material is produced by a cyclotron. Having a cyclotron and PET scanner just footsteps away from each other gives patients at our facility the benefit of a wider range of diagnostic tools than any other facility in the region," Dusing said.

"All this investment in technology takes us to the next level of diagnostic advances, molecular imaging. We now are able to determine what is physically happening on a cellular, metabolic level for early diagnosis of cancer and neurological diseases," said William Bunnell, the hospital's director of Radiology.

The addition of the PET/CT increases the depth of diagnostic, interventional and therapeutic options at the hospital. These include:

- A dedicated PET scanner and a separate 16-slice CT scanner.
- Leading-edge ultrasonography.
- A state-of-the-art neuro-interventional imaging suite.

- Two high-field strength MRI systems, employing echo-planar and spectroscopic image analysis.
- Access to the Hoglund Brain Imaging Center's 3 Tesla MRI and one of only four MEG (magnetoencephalography) devices in the country capable of creating functional images of a developing brain in the womb.
- The installation of a high-speed multi-slice CT scanner located inside the Level I Trauma Center.
- A fully digital Picture Archiving and Communication System (PACS) that will store all radiology images electronically. When installation is complete, this system will allow physicians throughout the hospital and the KUMC campus to immediately review and consult on radiology test results.

The PET/CT scanner will be fully operational in 2004 and will cost more than \$2 million.

Breast Cancer, *continued from page 1*

than 24 hours, back to my walking program in 10 days and back at work in four weeks," she said.

While not everyone recovers at the same rapid pace, this pragmatic,

upbeat attitude is typical of the woman who played basketball in high school and college, earned a master's degree in exercise physiology and has coached girls' basketball, volleyball and track.

"I understand how fortunate I

was to catch my cancer in an extremely early stage. And I have excellent support from my family and friends," Pivonka-Culver said.

Her advice for Breast Cancer Awareness Month is simple: "Follow all the guidelines for early detection."

Nurse Practice Council Sets “Magnetic” Standards

Yes, hospitals can have magnetism.

In fact, more than 80 health care organizations nationally have received Magnet designation from the American Nurses Credentialing Center.

Magnet hospitals are the cream of the crop for patient care and for nursing as a profession. Their coveted status and reputation make them places where patients want to go and nurses want to work.

The Nursing Practice Council was recently formed to set goals and establish standards of practice that will put The University of Kansas Hospital on the road to Magnet designation. The Nurse Practice Council is one of five councils – including research, quality, education and management – that are part of a new organizational structure called a shared decision-making model.

“In Magnet hospitals, nurses at all levels participate in decision-making and are valued members of the health care team,” explained Suzanne Shaffer, RN, who serves as co-chair of the council with Roxanne Perucca, RN. “The Nurse Practice Council is dedicated to encouraging managers at all levels to involve staff in decision-making, giving nurses responsibility, accountability and authority in their patient care.”

The council also will guide the delivery of nursing care throughout the hospital and establish the highest standards of clinical nursing prac-



Members of the Nurse Practice Council attended a recent monthly meeting. They include (front row) Roxanne Perucca, RN, co-chair, Suzanne Shaffer, RN, co-chair, Dana Cunningham, RN, Unit 42, (second row) Cynthia Morris, RN, Rehab Unit, Carol Roberts, RN, Infection Control, Susan Parker, RN, clinical assistant professor, KU School of Nursing, Tarih Klein, RN, Unit 46, (back row) Paul Owen, RN, Nursing Pool, Nancy Martin, RN, Post-Anesthesia Care Unit, Roger Scoggan, RN, Pediatric Intensive Care Unit, and Marilyn Werkowitch, RN, Unit 41.

tice. The council reviews and resolves broad nursing practice issues and functions as a resource on nursing practices, both internally and externally.

“Our job is to clearly define our standards of nursing practice and provide a framework for all nursing clinical activity in the hospital,” Shaffer added.

The hospital’s standards of practice must be consistent with national standards supported by national nursing specialty organizations, as well as regional, state and community practice standards, and those defined by The University of Kansas Hospital itself. They must also meet Joint Commission on Accreditation of

Healthcare Organizations (JCAHO) and Magnet certification standards.

Staff nurses comprise more than half of the Nursing Practice Council and represent all clinical areas. The council also has representatives from the KU School of Nursing, Risk Management, Infection Control, Nursing Informatics, the Standards Steering Committee, and Education and Development.

“It takes a commitment at all levels of an organization to go for Magnet designation,” Shaffer said.

The process can take several years and includes applying, submitting extensive documentation, a site visit and a final review by a credentialing committee.

United Way Campaign

University and hospital employees, staff and students who made donations to United Way during the first week of the campaign enjoyed a free Chris Cakes breakfast in the cafeteria Oct. 17. Emily Bewyer, speech therapist and a new employee, handed in her pledge form at the breakfast.



Sandra Colyer, office of the executive vice chancellor, waited to catch a pancake hot off the griddle. The United Way campaign continues through Oct. 24. The campus goal is to raise \$187,600 and increase participation by two percent. University faculty, staff and students can go to <https://donor.united-e-way.org> to make their pledges online. Hospital employees should return their pledge forms by mail or give them to their managers.



Front & Center

National COPD Spokesperson

Television actress Loni Anderson, best known for her work on "WKRP in Cincinnati," visited The University of Kansas Hospital Oct. 16 to talk about chronic obstructive pulmonary disease (COPD). She encouraged women experiencing the signs and symptoms of COPD to seek help. Anderson lost both of her parents to illnesses related to the disease, which is better known as chronic bronchitis or emphysema. She now tours the country as a spokesperson for the National Lung Health Education Program, which helps women overcome social pressures linked to smoking.



Helipad Opens

The University of Kansas Hospital's new rooftop helipad opened Oct. 20. It can support two 9,000-pound helicopters and features improved lighting, a fire-suppression system and a de-icing system. Relocation of the helipad provides helicopters easier access to the hospital and allows more rapid transport of patients to the Emergency Department and Level I Trauma Center.



Service Award

Jon Jackson (left), hospital senior vice president for System Integration, presented Larry Moore, KMBC-TV news anchor, with a plaque in recognition of his 20 years of service to the Cancer Golf Association. The award was presented at the Cancer Golf Association board meeting Oct. 9. Jackson serves as vice president of the association.



Open House

Members of the Occupational Health & Environmental Medicine Clinic welcomed visitors to their new offices in G110 Delp during an open house Oct. 16. The staff includes (front row) Carol Hickey, RN, case management specialist, Mary Icenogle, RN, occupational health nurse, Pam Foerster, RN, nurse manager, Latricia Smith, certified health care assistant, (back row) Gregory Bono, MD, medical director, Sarah Smith, office assistant, and Barbara Strain, business manager.

New Name and Improvements Unveiled for Internal Medicine Clinic

The University of Kansas Physicians, Inc., which operates more than a dozen outpatient clinics on the KUMC campus, has reorganized the General and Geriatric Medicine Clinic located in Suites E and F on the first floor of the hospital.

The clinic has a new name – the University of Kansas Internal Medicine Practice – and a new logo featuring the JayDoc. But that’s not all.

According to William Atkinson, MD, professor, General and Geriatric Medicine, many improvements are being made to the way the clinic does business.

“We’re revamping the clinic following a private practice model,” Atkinson said. “More doctors and staff have been hired, so turnaround times for an appointment have been greatly reduced. Customer service is a top priority with our staff. Most patients with urgent needs can make an appointment and be seen by a doctor within 24 hours.”

In addition, there will be more consistency of care. Patients will be seen by one primary care physician. Four physicians serve the clinic on



Staff members of the University of Kansas Internal Medicine Practice include Elizabeth Cromer, Paul McDonald, Vicki Siebs, RN, and William Atkinson, MD, medical director.

a full-time basis. The clinic also serves a strong educational mission within the academic medical center, Atkinson stressed, by providing a variety of specialized training opportunities for residents who are paired with attending physicians.

In addition, clinic space will soon be updated and expand into nearby Suite G, formerly occupied by the Neurology Clinic.

“We’re actively marketing the clinic and its services. We’re promoting it to all hospital and

university employees and staff and to other referring physician groups, such as the Cancer Center and Mid-America Cardiology, as a convenient location for all their primary care needs.”

Sunday, Oct. 26: Change Your Clock, Change Your Battery

A reminder from the Burnett Burn Center: When you change your clocks for daylight-saving time, you should also make sure each and every smoke alarm in your home is equipped with a working battery.

October is Burn Prevention Month. By providing an early warning and critical extra seconds to escape, smoke alarms cut in half your family’s risk of dying in a home fire – but only if they work.

Optional Life Insurance Reminder

Hospital employees have until Oct. 31, 2003, to either enroll in or increase their optional life insurance coverage through Minnesota Life. Up to \$35,000 in additional coverage is available without answering any questions about your health. For more information, refer to the package mailed to your home earlier this month or contact Minnesota Life at 1-877-215-1476 or visit the company’s Web site at www.lifebenefits.com. Additional enrollment forms are available in Hospital Human Resources, 5040 Delp.

WHAT'S NEWS

AT KUMC

Heart Hospital Groundbreaking

Everyone on the KUMC campus is invited to the heart, lung and vascular hospital groundbreaking on Wednesday, Oct. 29. A brief ceremony will take place at 11:45 a.m. on the former hospital helipad.

Projected for completion in 2006, the \$72 million facility will be built adjacent to the existing hospital and incorporate the latest concepts in cardiovascular care. It will feature expanded space for catheterization and electrophysiology labs, operating rooms and nursing units for intensive care and inpatient acute telemetry. The new facility will also include an expanded ground floor Emergency Department.

Student Housing Web Site

Student Counseling and Educational Support Services, with the assistance of Internet Development, has created a housing referral Web database. This free resource for landlords and KUMC students and residents lists local available housing. More than 50 properties are posted at www2.kumc.edu/classifieds/housingads.

The Web site allows users to browse ads based upon city, state, zip code, size and type, such as properties to lease, rent or for sale. For each property listing, there are

links to maps and driving directions to KUMC. The site averages more than 2,000 hits per month, according to Elvia Brown, administrative specialist, who monitors the site.

Houses are posted for 60 days and then automatically archived. Landlords can go directly to the site to post their listings.

Lands' End Corporate Wear

Lands' End Corporate Wear is now available to all employees of The University of Kansas Hospital. Departments and individuals can order a variety of Lands' End items – from shirts to tote bags – with the hospital's logo.

To order, just visit the hospital's intranet site at intranet.kumc.com. You can access the "Corporate Wear" site through "Quick Links" on the front page. The site provides ordering guidelines and order forms.

Individual orders must be processed with personal credit cards. Department orders may be made through Materials Management and require a signed general requisition form from your department manager with appropriate department budget numbers.

Employees who plan to wear logo items to work should be sure to follow the Grooming and Dress Standards Guidelines outlined in the

Corporate Policies and Procedures manual.

If you have questions about the new Corporate Wear program, contact Amy Metcalf, Relational Marketing manager, at 8-1233.

Heart of Healthcare Tickets on Sale

Tickets for the 13th annual Nursing: The Heart of Healthcare banquet are now on sale. The event, sponsored by the University of Kansas School of Nursing, will be held Friday, Nov. 7, at the Westin Crown Center Hotel, Kansas City, Mo. The reception begins at 6 p.m., followed by dinner from 7-9 p.m.

This annual public service program recognizes outstanding registered nurses in Kansas and the Kansas City metropolitan area for their dedication to patient care, their communities and the nursing profession.

This year's 10 winners were chosen from more than 350 nominations of outstanding registered nurses from throughout the state of Kansas and the metropolitan Kansas City area. The program gives patients and families, colleagues, health professionals and community members an opportunity to honor exceptional registered nurses who have touched their lives.

Larry Moore, news anchor of KMBC-TV, will serve as host and master of ceremonies for the banquet. The banquet costs \$50 per person or \$500 for a table of 10. Contributions are also welcome and fully tax-deductible. For more information, contact Kari Ziblut at 8-1616 or at kziblut@kumc.edu.

Classifieds, etc.

Automotive:

2001 Dodge Intrepid, gold, all power, fully loaded, 82K, V-6, cruise control, meticulously maintained, immaculate, huge trunk, \$5,300. 913-709-9089.

2001 Mitsubishi Eclipse GT, black, V-6, 21.5K, still under warranty, premium package, leather, 4-disc CD, \$16,750 OBO. 913-909-6465.

1994 Pontiac Grand Prix, maroon, 4-door, automatic, power windows/locks, 139K, excellent mechanical condition, well maintained, \$2,500 OBO. 913-239-9195.

1987 Acura, white, tan interior, needs transmission. Repair and drive or use parts, \$500 OBO. 913-631-0578.

For Sale:

Frigidaire refrigerator, brown, \$50; Whirlpool heavy-duty gas dryer, white, \$50; General Electric washer and dryer, cream, \$100 both or \$60 each. 816-391-0231.

Direct TV satellite and box, \$150; leopard bathroom shower curtain, lamp and candle, \$20; designer handbags, boots and clothing for women and children. 816-769-2515.

Moving sale, 8003 W. 147th Terr., Overland Park, Oct. 25 and 26, 8 a.m.-4 p.m., lawn equipment, lots of misc. 913-897-9069.

Yard sale for unemployed school teachers, Oct. 25, 9 a.m.-4 p.m., furniture, appliances, toys, St. Francis Xavier parking lot, 52nd and Troost.

Extra-large dog kennel, 40" x 27" x 30", 4 months old, paid \$110, asking \$75. 913-451-2659.

Kenmore gas stove, 2 years old, almond, sealed top, self-cleaning oven, \$200. 913-262-8285.

Jazzy electric wheelchair, approximately 5 years old, \$700 OBO. 816-767-8527.

Wanted:

Sprint PCS Touchpoint phone charger. 913-262-0799.

Free:

Clay pots, all sizes. 913-385-2107.

IN THE CENTER

Irene M. Cumming
President and CEO
The University of
Kansas Hospital

Donald Hagen, MD
Executive Vice Chancellor
University of Kansas
Medical Center

Barbara Jaekel, Editor
Val Renault, Senior Writer
Kevin White, Senior Graphic Designer
Jan Lewis, Editorial Manager
Mary King, Communications Services Director

In The Center is a weekly employee publication published by The University of Kansas Hospital's Communications Services Department. Send story ideas to Barbara Jaekel, Bldg. 48, Room 1070, or e-mail bjaelk or call 8-1074.

Ad Policy - Send or bring your ad, 30 words or less, to Bldg. 48, Room 1070, fax to 8-1063, or e-mail bjaelk by noon Thursday of the week before it is to run. Ads run free of charge for employees, students and volunteers. All ads must include the advertiser's name and work extension (or student box number) for verification. Only home phone numbers—no pager numbers or work extensions—will be published. Please include area code. No ads for commercial services or pets for sale will be accepted. Ads will not be taken by telephone. Ads may be held a week if space is limited.

Coming Up

Friday, Oct. 24

- Pampered Chef Christmas in October benefit for the Kansas Cancer Institute, 8:45 a.m.-5:30 p.m., Wyandotte Room.
- "New Developments in Colorectal Cancer Treatment," Peter O'Dwyer, MD, University of Pennsylvania School of Medicine, 8:30 a.m., 3015 Sudler.
- Psychiatry Grand Rounds, "Package Insert Changes in Child and Adolescent Antidepressant Meds," Tahir Rahman, MD, 10:30 a.m.-noon, Sudler Auditorium.
- Neurology Grand Rounds, "Evidence-Based Transformation of Stroke Therapy," Pierre Fayad, MD, University of Nebraska Medical Center, 8:30-9:30 a.m., 1563a hospital.
- Fifth annual Medical Staff Dinner and Dance, 6 p.m., Indian Hills Country Club.

Saturday, Oct. 25

- Urology Grand Rounds, "Male Reproduction and Endocrinology," Jay Sandlow, MD, Department of Urology, Medical College of Wisconsin, 7:30-11:35 a.m., Lied Auditorium.

Tuesday, Oct. 28

- Employee flu shots, 7 a.m.-4 p.m., Occupational Health Clinic, G110 Delp.

Wednesday, Oct. 29

- Support Services employee flu shots, 9-11:30 a.m., Support Services, Room 120F.

Thursday, Oct. 30

- Music at the Med, KU Men's Glee Club, noon, Battenfeld Auditorium.
- "Treatment and Prevention of Obesity," Robert Jeffery, PhD, University of Minnesota School of Public Health, noon-1 p.m., B018 School of Nursing.

Student Flu Shots

KUMC students will have an opportunity to receive flu shots from 11 a.m.-1 p.m. on Thursday, Oct. 30, and Tuesday, Nov. 4, in Stoland Lounge. The fee is \$12, and students must show their ID badges. Students may also participate in the hospital's free Drive-Thru Flu Day, Saturday, Nov. 1, 8 a.m.-1 p.m. If you have questions, contact Rebecca Vaughn, director of Student Health, at 8-4273.