

Kansas Cancer Registry



National Cancer Registrars Week: April 13th - 17th

Mark your calendars! April 13th- 17th is National Cancer Registrars Week (NCRW). NCRW was established by the National Cancer Registrars Association (NCRA) as an annual celebration to promote the amazing work of Cancer Registry professionals throughout the country. Though Cancer Registrars officially celebrate during the second week in April, in truth they should celebrate year-round, for they display an incredible dedication toward quality cancer data management.

KCR would like to thank all of you for your hard work throughout the year. We encourage you to find celebration ideas and promotional materials at <http://www.ncra-usa.org/join/ncrw.htm>.

To all Kansas Cancer Registrars, have a Happy National Cancer Registrars Week!

Reporting Schedule

Month of Diagnosis	Due to KCR by:
January 2008	July 2008
February 2008	August 2008
March 2008	September 2008
April 2008	October 2008
May 2008	November 2008
June 2008	December 2008
July 2008	January 2009
August 2008	February 2009
September 2008	March 2009
October 2008	April 2009
November 2008	May 2009
December 2008	June 2009

Defining Head and Neck Cancers

Most head and neck cancers are identified as the mucosal surfaces in the head and neck that have moist tissue lining and cavities that are open to the environment. These sites include the oral cavity, salivary glands, paranasal sinuses and nasal cavity, pharynx, nasopharynx, oropharynx, hypopharynx, larynx, and lymph nodes in the upper part of the neck. Most cancers in these areas have a common cell lineage. They start out in the squamous cells that line the mucosal surfaces in the head and neck and these cells can mutate and replicate into cancer. Symptoms can start out as a lump or a sore throat that won't go away. A difficulty swallowing and or a change in hoarseness in the voice can also be indicative of a greater problem. Head and neck cancers account for approximately 3 to 5 percent of all cancers in the US and these cancers are more prevalent in men and people over the age of 50.



Abstracting Questions and Answers

Questions adapted from:

SEER Inquiry System (www.seer.cancer.gov)

Question

What code is used to represent a positive intraparotid or a periparotid lymph node for a parotid primary?

Answer

Assign code 10 for a single positive intraparotid or periparotid lymph node. If multiple nodes are involved, assign the appropriate code from the 20 series. A recent revision to the CS lymph nodes scheme for parotid places both intraparotid and periparotid lymph nodes under code 10. Please see the August 21, 2006 update to the CS staging manual. <http://www.cancerstaging.org/cstage/cshtml.html>

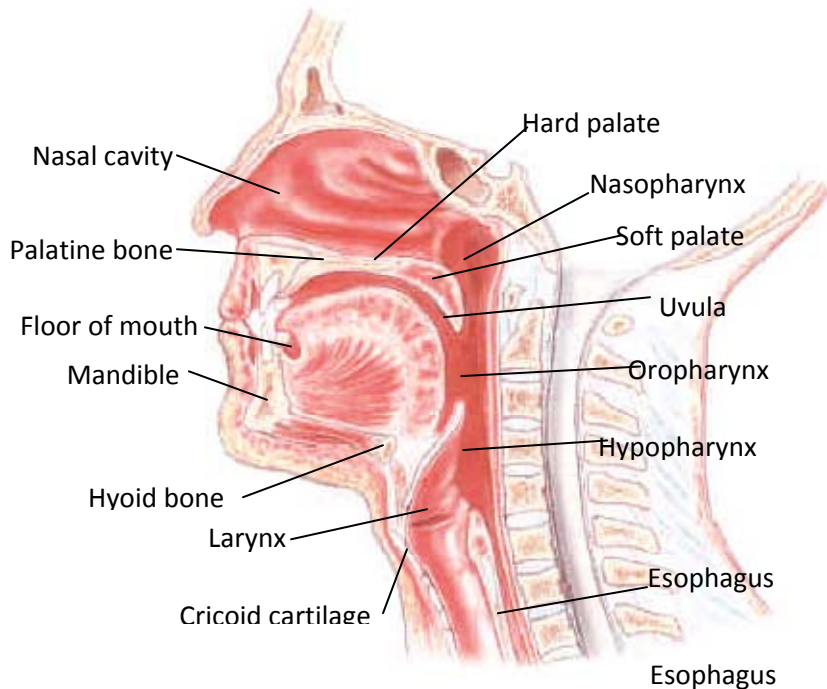
Question

How do you code histology for a myofibroblastic sarcoma of the soft tissue of the head and neck?

Answer

Assign code 8825/3 [Myofibroblastoma, malignant]. According to the WHO Classification of Soft Tissue Tumors, "Low grade myofibroblastic sarcoma represents a distinct atypical myofibroblastic tumor often with fibromatosis-like features and predilection for the head and neck." Also called myofibrosarcoma.

Head and Neck Anatomy



Upcoming Trainings and Conferences

- ❖ The National Cancer Registrars Association (NCRA) 35th Annual Education Conference: May 31 – June 3, 2009, New Orleans – go to <http://ncra-usa.org/> for more information
- ❖ Annual SEER workshop Sunday May 31, 2009 in New Orleans. For more information visit <http://www.seer.cancer.gov/qi/education.html>
- ❖ The North American Association of Central Cancer Registries (NAACCR) Annual Conference: June 13-19, 2009 San Diego, CA
- ❖ The Kansas Cancer Registrars Association (KCRA) Annual Meeting: October 15-16, 2009, Hays, KS

- ❖ **NAACCR Webinar Series 2008-2009**

Kansas Cancer Registry is hosting a series of **free** NAACCR webinars. The dates, topics and locations are as follows:

6/11/2009 Collecting Cancer Data: Prostate – **Kansas Cancer Registry**

7/9/2009 Advanced Coding & Abstracting - **Via Christi Regional Medical Center, Wichita, KS**

8/6/2009 Collecting Cancer Data: Breast - **St. Francis Health Center, Topeka, KS**

The scheduled time for all the webinars is from 1:00PM – 4:00PM CST and includes lectures, quizzes, exercises, and a question and answer session. **Note: NAACCR's CHANGE OF DATE for the June Webinar Collecting Cancer Data: Prostate.**

To register or obtain more information about the webinars, please feel free to contact Ms. Christine Megee at 913-588-4724 (CMEGEE@kumc.edu), Ms. Ashley Bell at 913-588-4728 (ABELL@kumc.edu), or Ms. Ying Liu at 913-588-4726 (YLIU@kumc.edu)

Note: Each webinar is approved for 3 CE hours

2008 Updated Case-Finding

ICD-9-CM Codes	Diagnosis (in preferred ICD-O-3 terminology)
042	AIDS (review cases for AIDS-related malignancies)
140.0 - 208.9	Malignant neoplasms except 173.0-173.9
225.0 - 225.9	Benign Brain and Other Parts of Nervous System
227.3 & 227.4	Benign Pituitary Gland and Craniopharyngeal duct (227.3), Pineal Gland (227.4)
230.0 - 234.9	Carcinoma in situ (Except 232.0 – 232.9 and 233.1)
237.0, 237.1, 237.5, 237.6, 237.70, 237.71, 237.72, 237.9	Neoplasm of Uncertain Behavior Endocrine Gland and Nervous System – Includes Pineal Gland, Brain, and Spinal Cord, Meninges and Neurofibromatosis
238.4	Polycythemia vera (9950/3)
238.6	Solitary plasmacytoma (9731/3) Extramedullary plasmacytoma (9734/3)
238.71 (New Code)	Essential Thrombocythemia (9962/3) Essential Hemorrhagic Thrombocythemia Essential Thrombocytosis Idiopathic (Hemorrhagic) Thrombocythemia Primary Thrombocytosis
238.72 (New Code)	Refractory anemia (RA) (9980/3) Refractory anemia with ringed sideroblasts (RARS) (9982/3) Refractory cytopenia with multilineage dysplasia (RCMD) (9985/3) Refractory cytopenia with multilineage dysplasia and ringed sideroblasts (RCMD-RS)
238.73 (New Code)	Refractory anemia with excess blasts-1 (RAEB-1) (9983/3) Refractory anemia with excess blasts-2 (RAEB-2) (9983/3)
238.74 (New Code)	Myelodysplastic syndrome with 5q deletion (9986/3) 5q minus syndrome NOS Chronic myeloproliferative disease (9960/3) Myelosclerosis with myeloid metaplasia (9961/3) Refractory cytopenia with multilineage dysplasia (9985/3) Therapy-related myelodysplastic syndrome (9987/3)
238.75 (New Code)	Myelodysplastic syndrome, unspecified (9989/3)
238.76 (New Code)	Myelofibrosis with myeloid metaplasia (9961/3) Agnogenic myeloid metaplasia Idiopathic myelofibrosis (chronic) Myelosclerosis with myeloid metaplasia Primary myelofibrosis
238.79 (New Code)	Lymphoproliferative disease (chronic) NOS (9970/1) Megakaryocytic myelosclerosis (9961/3) Myeloproliferative disease (chronic) J5511 NOS (9960/3) Panmyelosis (acute) (9931/3)
273.2	Gamma heavy chain disease; Franklin's disease (9762/3)
273.3	Waldenstrom's macroglobulinemia (9761/3)
288.3	Hypereosinophilic syndrome (9964/3)
289.83 (New Code)	Acute myelofibrosis (9931/3)
795.06 (New Code)	Papanicolaou smear of cervix with cytologic evidence of malignancy (without histologic confirmation) (positive Pap smear)
V10.0 - V10.9	Personal history of malignancy (review these for recurrences, subsequent primaries, and/or subsequent treatment)
V58.0	Admission for radiotherapy
V58.11 – V58.12	Admission for chemotherapy
V66.1	Convalescence following radiotherapy
V66.2	Convalescence following chemotherapy
V67.1	Radiation therapy follow-up
V67.2	Chemotherapy follow-up
V76.0 - V76.9	Special screening for malignant neoplasm
V86.0	Estrogen receptor positive status [ER+] (new code)
V86.1	Estrogen receptor negative status [ER-] (new code)

Are You Current?

- ❖ Please submit your cases using NAACCR Version 11.2 after running NAACCR Version 11.2 Edits.
- ❖ Use Multiple Primary and Histology Coding Rules Manual (released January 01, 2007) (http://www.seer.cancer.gov/tools/mphrules/mphrules_manual_01012007.pdf) on all cases diagnosed January 1, 2007 and forward
- ❖ Use Collaborative Staging & Coding Manual, Version 01.04.00 (released October 31, 2007) (<http://www.cancerstaging.org/cstage/index.html>) to calculate collaborative stage on cases currently being abstracted. Please check the site regularly for updates

2009 Contact Information

Please visit our website (www2.kumc.edu/kcr/downloads) to update your 2009 contact information and submit the form to Victoria Hundley (Email: vhundley@kumc.edu; Fax: 913-588-7384)

The Kansas Cancer Registry (KCR), under the direction of Dr. Sue Min Lai, has expanded in recent years to collect and maintain a population based longitudinal database of all Kansans diagnosed with cancer.

KCR is the only population-based source of information on cancer incidence in the State of Kansas. It provides information on the occurrence of cancer, stage at diagnosis, survival and sub-populations affected by different types of cancer. Registry information can be used by researchers to evaluate the effectiveness of new treatments and by public health professionals to implement and monitor prevention efforts.

Thanks to facilities across the state of Kansas who report cancer cases, KCR has quality data to help in the fight against cancer.

KCR Staff

Sue-Min Lai	913-588-2744	SLAI@kumc.edu
John Keighley	913-588-2792	JKEIGHLE@kumc.edu
Sarma Garimella	913-588-2724	SGARIMEL@kumc.edu
Zhimin Shen	913-588-4723	ZSHEN@kumc.edu
Cuiwei Wang	913-588-4725	CWANG2@kumc.edu
Christine Megee	913-588-4724	CMEGEE@kumc.edu
Ashley Bell	913-588-4728	ABELL@kumc.edu
Ying Liu	913-588-4726	YLIU@kumc.edu
Daniel McBride	913-588-4727	DMCBRIDE@kumc.edu
Victoria Hundley	913-588-4730	VHUNDLEY@kumc.edu

Thanks to all KCR staff members who contributed to the publication of this newsletter.